
L2200 Series Mixing Faucets
CT2200 Series Mixing Faucets
BT2200 Series Mixer Taps



WaterSaver Faucet Co. is pleased to announce a new design with improved functionality for our L2200, CT2200 and BT2200 series widespread mixing faucets. These faucets are counter, deck or bench mounted faucets that incorporate two separate valve bodies and a center gooseneck fitting. These three components are installed in three separate holes that are predrilled in the counter or sink. The valve inlets are supplied by two flexible copper tubes. The valves are connected to the center gooseneck fitting by two flexible hose connectors that are assembled in the field.

The L2200/CT2200/BT2200 series faucets are popular in both laboratory and general purpose applications. The faucet handles are easy to reach and use, so they are commonly used at sinks that are accessible to persons with disabilities. The spout is easily configured in many variations, making these faucets easy to customize for any application.

The updated design facilitates installation of the faucet and keeps the handles in the correct position and alignment when in use. This change does not affect the appearance or operation of these faucets.

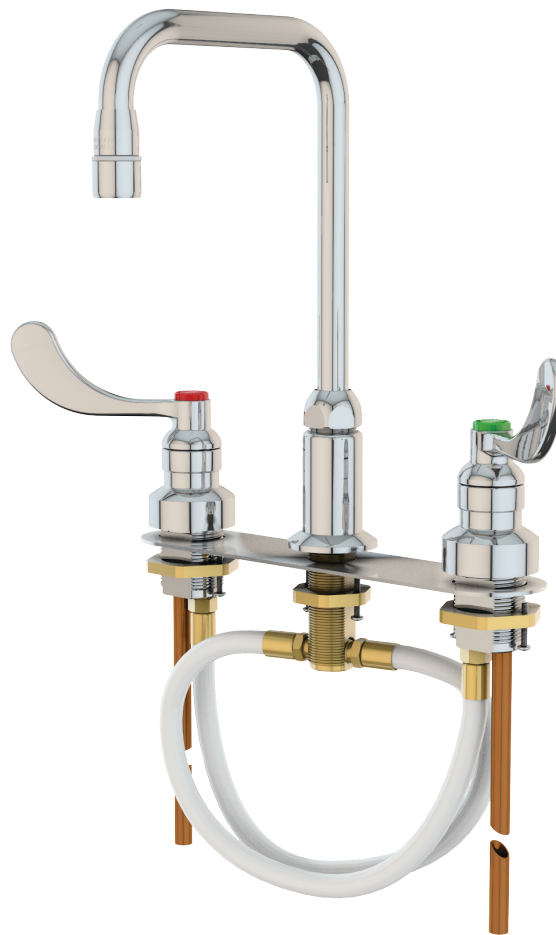
Previous Design

In the previous design, the two valve bodies and the center fitting each had a round mounting shank and lockwasher. It was difficult to align the components in proper orientation to each other during installation. Installation was particularly challenging if the faucet was installed after the sink had already been installed in the countertop.

As the faucet was used over time, the valve bodies had a tendency to work loose and begin to rotate on the countertop. This was particularly likely to occur if the faucet was supplied with wrist blade handles, where the force of opening and closing the faucet is applied off center. In extreme cases, the handles could be gradually pushed back until they might hit the backsplash or wall behind the sink.

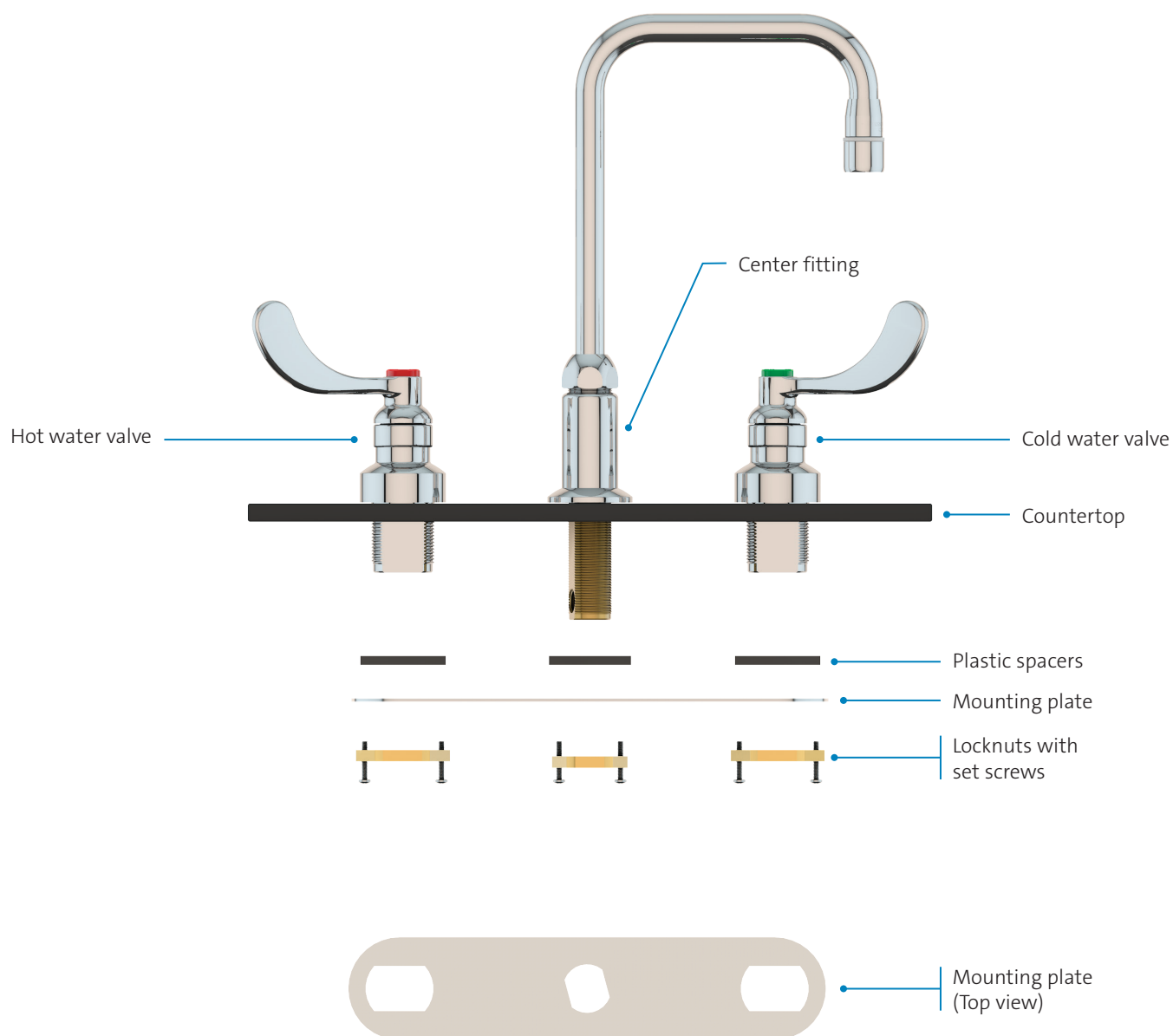
New Design

The updated design addresses these issues by incorporating a stainless steel mounting plate that is installed underneath the countertop. The plate has three “double D” cutouts for the mounting shanks on the two valves and the center fitting. The shanks have a mating profile that fits into the cutouts on the plate. The plate locks the two valves and center fitting into position. The mounting plate makes installation easy and holds the components in the correct alignment for as long as the faucet is installed.



Features of the updated L2200/CT2200/BT2200 series faucets include:

- Stainless steel mounting plate installed underneath the countertop is used to align the valves and center fitting during installation.
- Mounting plate holds the three components in proper alignment for as long as the faucet is in use.
- The valve bodies and center fitting are furnished with locknuts with set screws. The locknuts are secured in place by using a screwdriver to tighten the set screws, rather than by having to turn a wrench in a tight space.



Installation Instructions for New Design L2200/CT2200/BT2200 Faucets

1. Provide (2) 1-3/8" holes for the water valves and (1) 1-1/32" hole for the center fitting.
2. Place the valve bodies and center fitting into the holes.
3. If installing the faucet on the ledge of a stainless steel sink, slide the plastic spacers over the mounting shanks of the valve bodies and center fitting. If installing the faucet on a laboratory countertop, the spacers are not required.
4. Place the stainless steel mounting bracket on the mounting shanks. The "double D" cutouts in the mounting plate will position the valve bodies and center fitting in the correct alignment.
5. Thread the locknuts onto the mounting shanks until snug. Tighten the set screws on the locknuts.
6. Apply PTFE tape or other thread sealant to the external thread on the flexible hose connectors on the valves. Thread the end of each connector into the internal threads on the bottom of the mounting shank of the center fitting.

Updated Catalog Information

Catalog drawings for the most commonly used configurations of these faucets are included in this product bulletin. For other configurations, please contact our office for updated drawings.

Effective Date

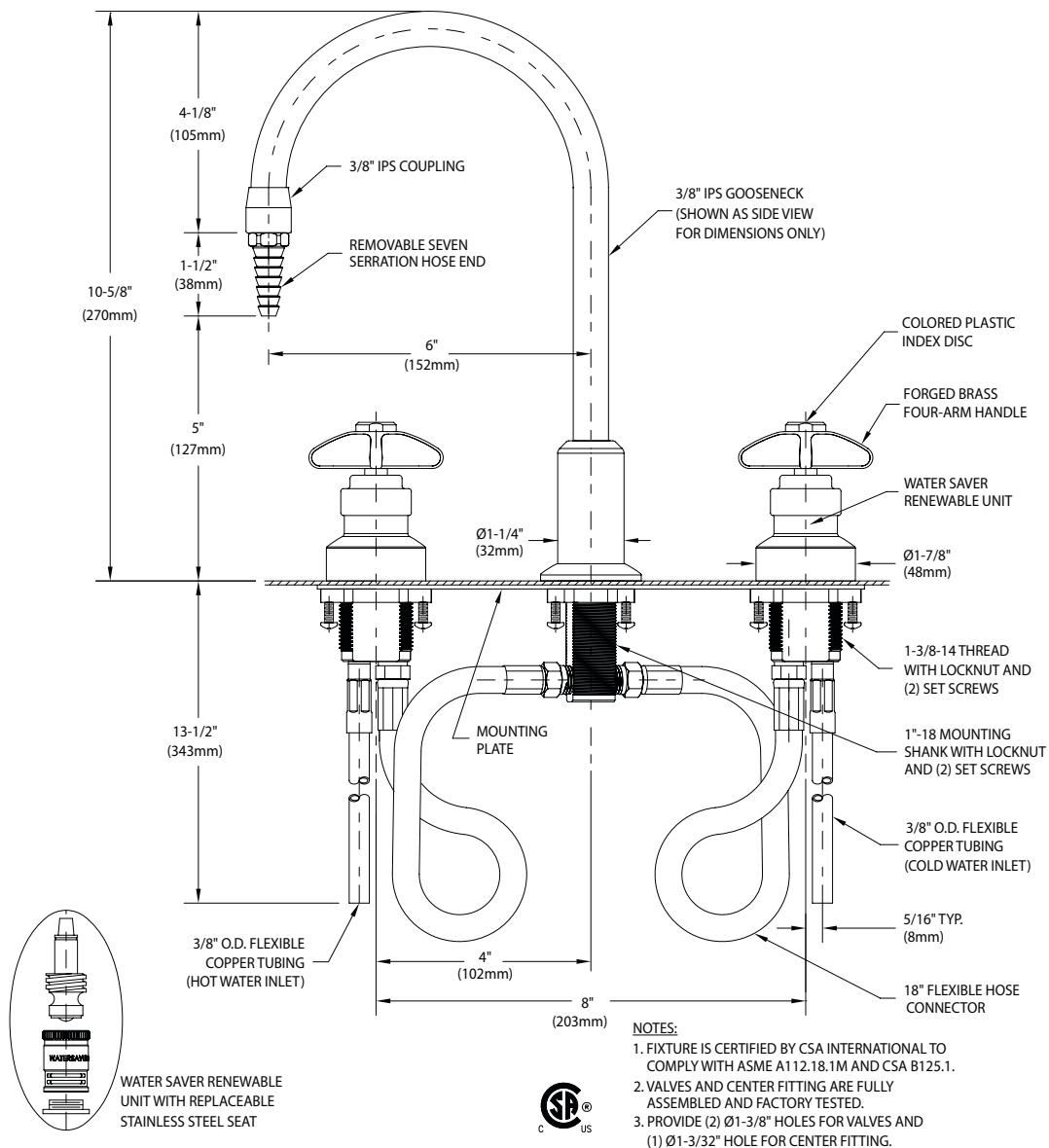
This design change will be implemented for all L2200/CT2200/BT2200 faucets effective as of February 15, 2020. All orders shipped after that date will incorporate the new design.

Important Note: The diameter of the mounting shank on the valve bodies is not affected by this design change. However, the diameter of the mounting shank on the center fitting will increase as a result of this design change. The diameter of the mounting shank on the center fitting will be changed to 1" (25.4mm). The hole for the center fitting should therefore be 1-1/32" (26.2mm).

This change will not affect installation of these faucets on stainless steel sinks with predrilled holes. However, when installing these faucets on laboratory countertops such as epoxy resin, phenolic or plastic laminate tops, it will be necessary to increase the hole size for the center fitting to 1-1/32" (26.2mm).



- ☐ **L2211** Laboratory Mixing Faucet, Deck Mounted, 6" Rigid Gooseneck
- ☐ **L2212** Same as above except with Swing Gooseneck
- ☐ **L2214** Same as above except with Rigid/Swing Gooseneck

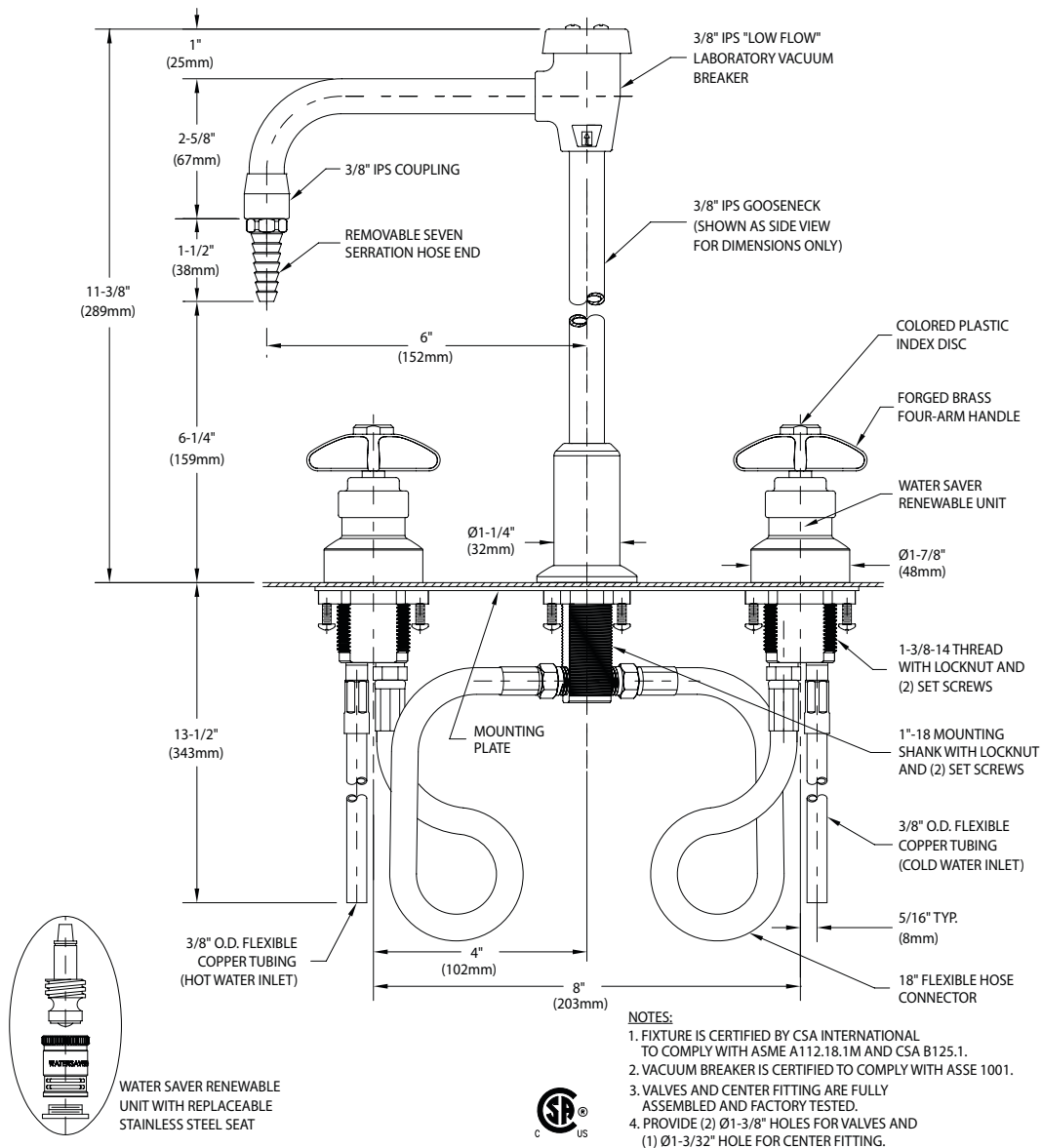


THIS SPACE FOR ARCHITECT/ENGINEER APPROVAL

Due to continuing product improvement, the information contained in this document is subject to change without notice. All dimensions are $\pm 1/4"$ (6mm). Rev. 122619



- ☐ **L2211VB** Laboratory Mixing Faucet, Deck Mounted, 6" Rigid Vacuum Breaker Gooseneck
- ☐ **L2212VB** Same as above except with Swing Vacuum Breaker Gooseneck
- ☐ **L2214VB** Same as above except with Rigid/Swing Vacuum Breaker Gooseneck

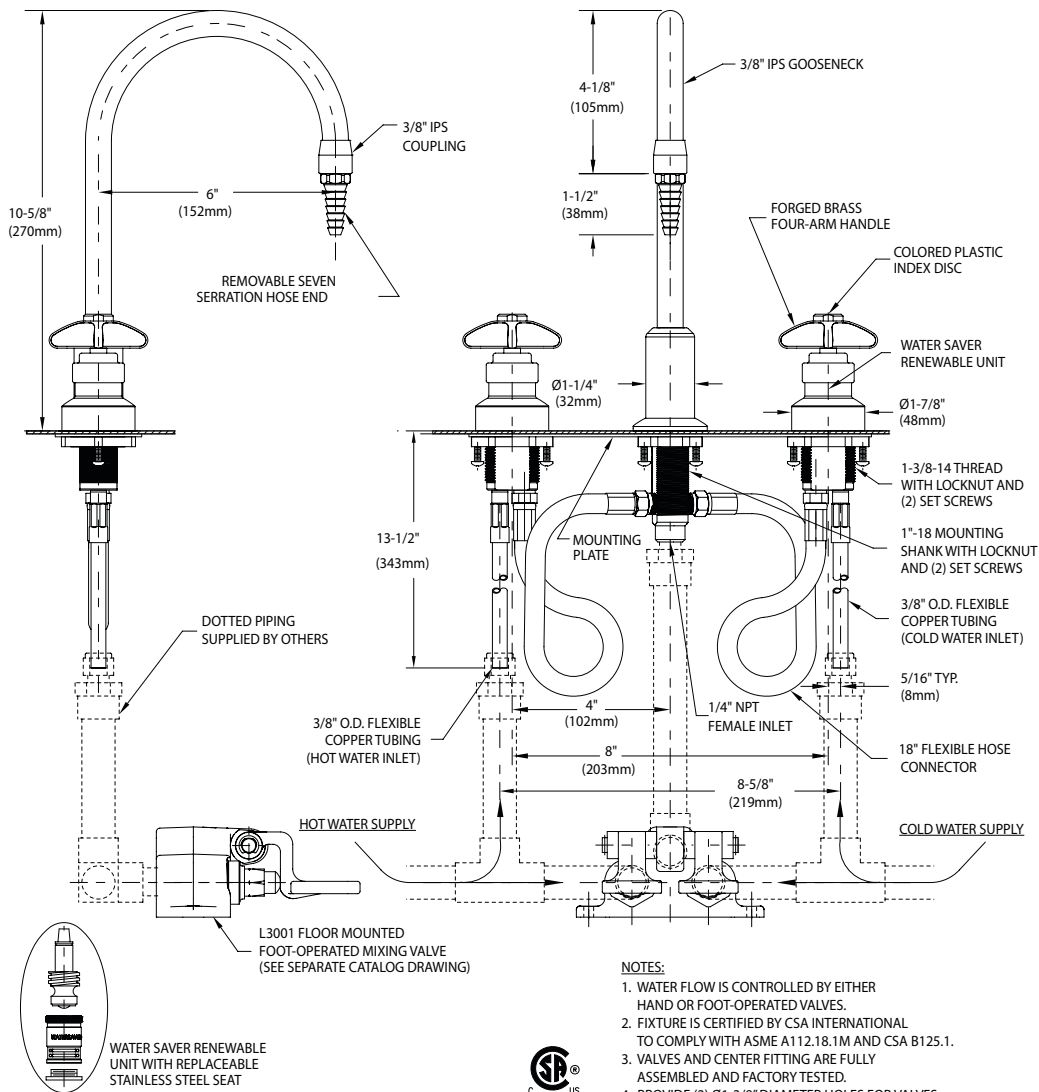


THIS SPACE FOR ARCHITECT/ENGINEER APPROVAL

Due to continuing product improvement, the information contained in this document is subject to change without notice. All dimensions are $\pm 1/4"$ (6mm). Rev. 122619



- ☐ **L2211TWI-3001** Laboratory Mixing Faucet, Deck Mounted, 6" Rigid Gooseneck, Foot-Operated Mixing Valve
- ☐ **L2212TWI-3001** Same as above except with Swing Gooseneck
- ☐ **L2214TWI-3001** Same as above except with Rigid/Swing Gooseneck



NOTES:

1. WATER FLOW IS CONTROLLED BY EITHER HAND OR FOOT-OPERATED VALVES.
2. FIXTURE IS CERTIFIED BY CSA INTERNATIONAL TO COMPLY WITH ASME A112.18.1M AND CSA B125.1.
3. VALVES AND CENTER FITTING ARE FULLY ASSEMBLED AND FACTORY TESTED.
4. PROVIDE (2) Ø1-3/8" DIAMETER HOLES FOR VALVES AND (1) Ø1-1/32" HOLE FOR CENTER FITTING.

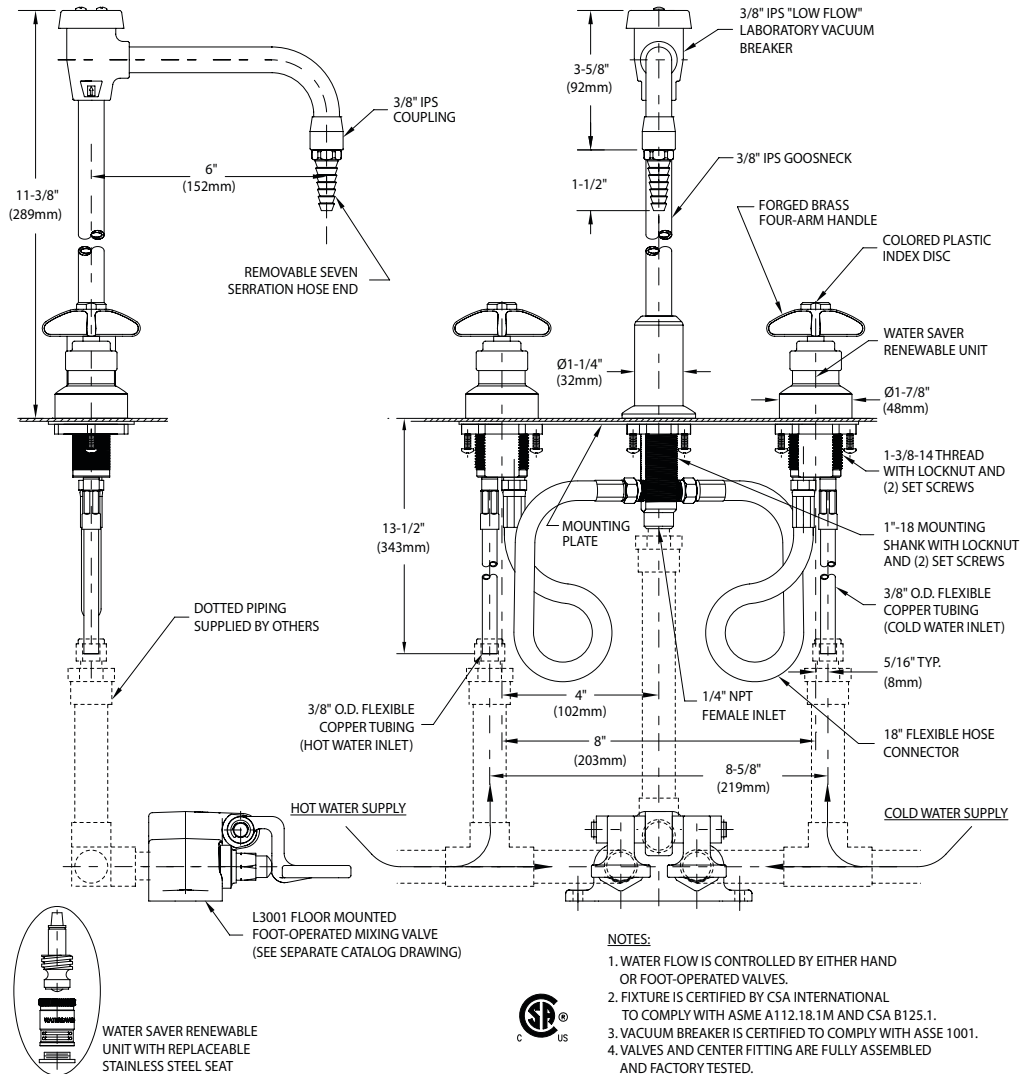


THIS SPACE FOR ARCHITECT/ENGINEER APPROVAL

Due to continuing product improvement, the information contained in this document is subject to change without notice. All dimensions are $\pm 1/4"$ (6mm). Rev. 122619



- ☐ **L2211TWI-VB-3001** Laboratory Mixing Faucet, Deck Mounted, 6" Rigid Vacuum Breaker Gooseneck, Foot-Operated Mixing Valve
- ☐ **L2212TWI-VB-3001** Same as above except with Swing Vacuum Breaker Gooseneck
- ☐ **L2214TWI-VB-3001** Same as above except with Rigid/Swing Vacuum Breaker Gooseneck



NOTES:

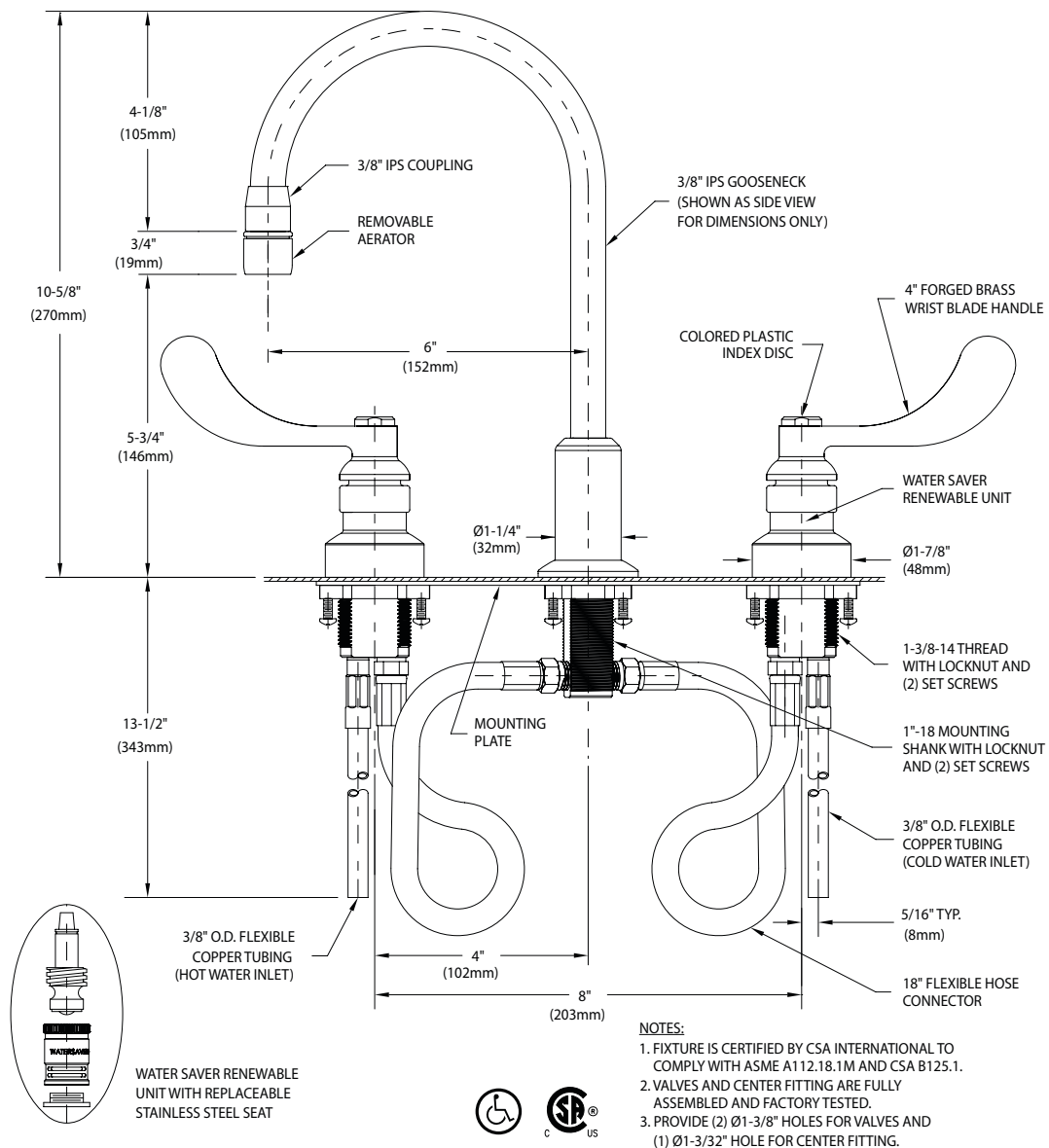
1. WATER FLOW IS CONTROLLED BY EITHER HAND OR FOOT-OPERATED VALVES.
2. FIXTURE IS CERTIFIED BY CSA INTERNATIONAL TO COMPLY WITH ASME A112.18.1M AND CSA B125.1.
3. VACUUM BREAKER IS CERTIFIED TO COMPLY WITH ASSE 1001.
4. VALVES AND CENTER FITTING ARE FULLY ASSEMBLED AND FACTORY TESTED.
5. PROVIDE (2) Ø1-3/8" DIAMETER HOLES FOR VALVES AND (1) Ø1-1/32" HOLE FOR CENTER FITTING.

THIS SPACE FOR ARCHITECT/ENGINEER APPROVAL

Due to continuing product improvement, the information contained in this document is subject to change without notice. All dimensions are $\pm 1/4"$ (6mm). Rev. 122619



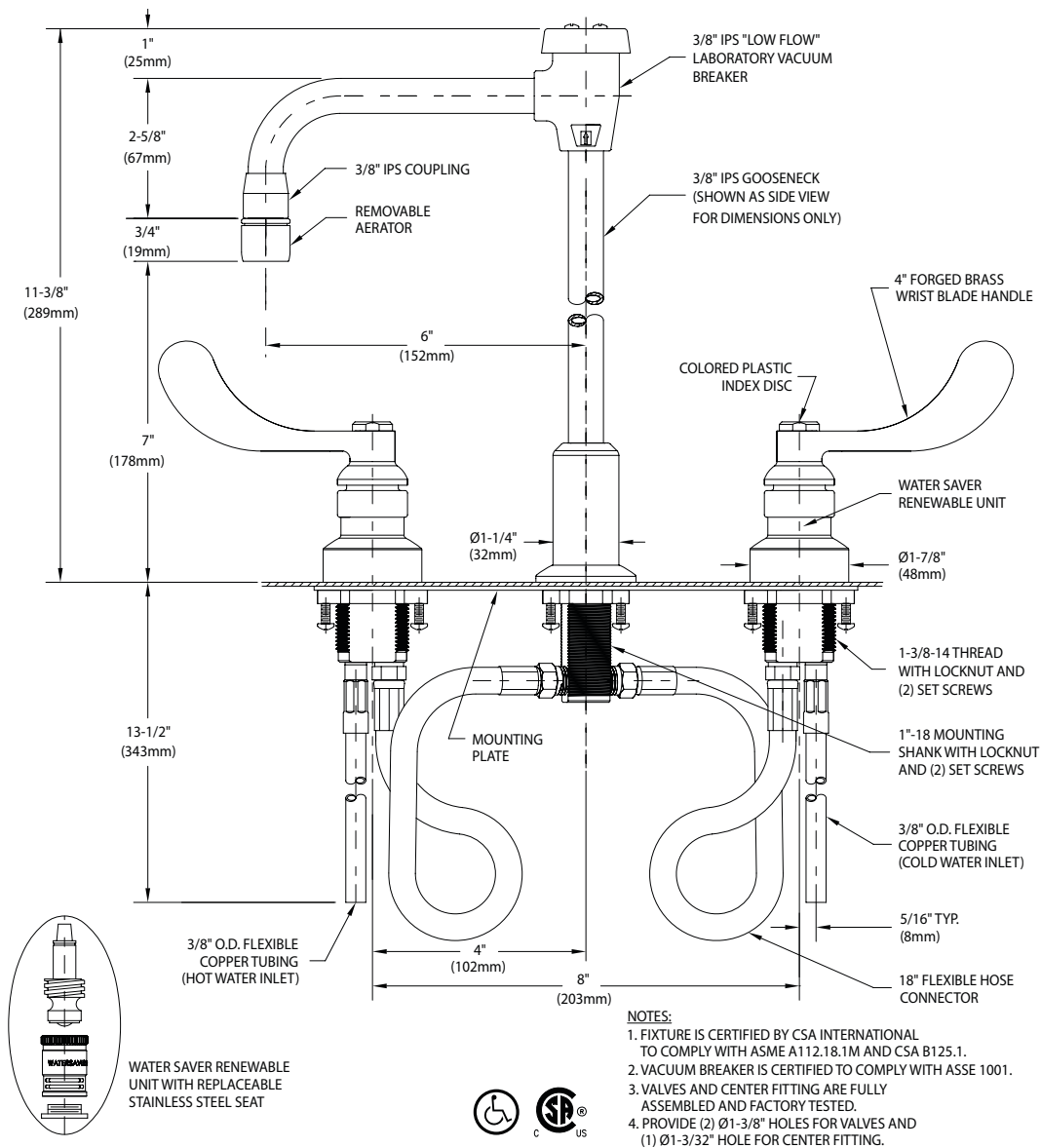
- ☐ **L2221** Laboratory Mixing Faucet, Deck Mounted, 6" Rigid Gooseneck, Aerator, Wrist Blade Handles
- ☐ **L2222** Same as above except with Swing Gooseneck
- ☐ **L2224** Same as above except with Rigid/Swing Gooseneck



THIS SPACE FOR ARCHITECT/ENGINEER APPROVAL

Due to continuing product improvement, the information contained in this document is subject to change without notice. All dimensions are $\pm 1/4"$ (6mm). Rev. 122619

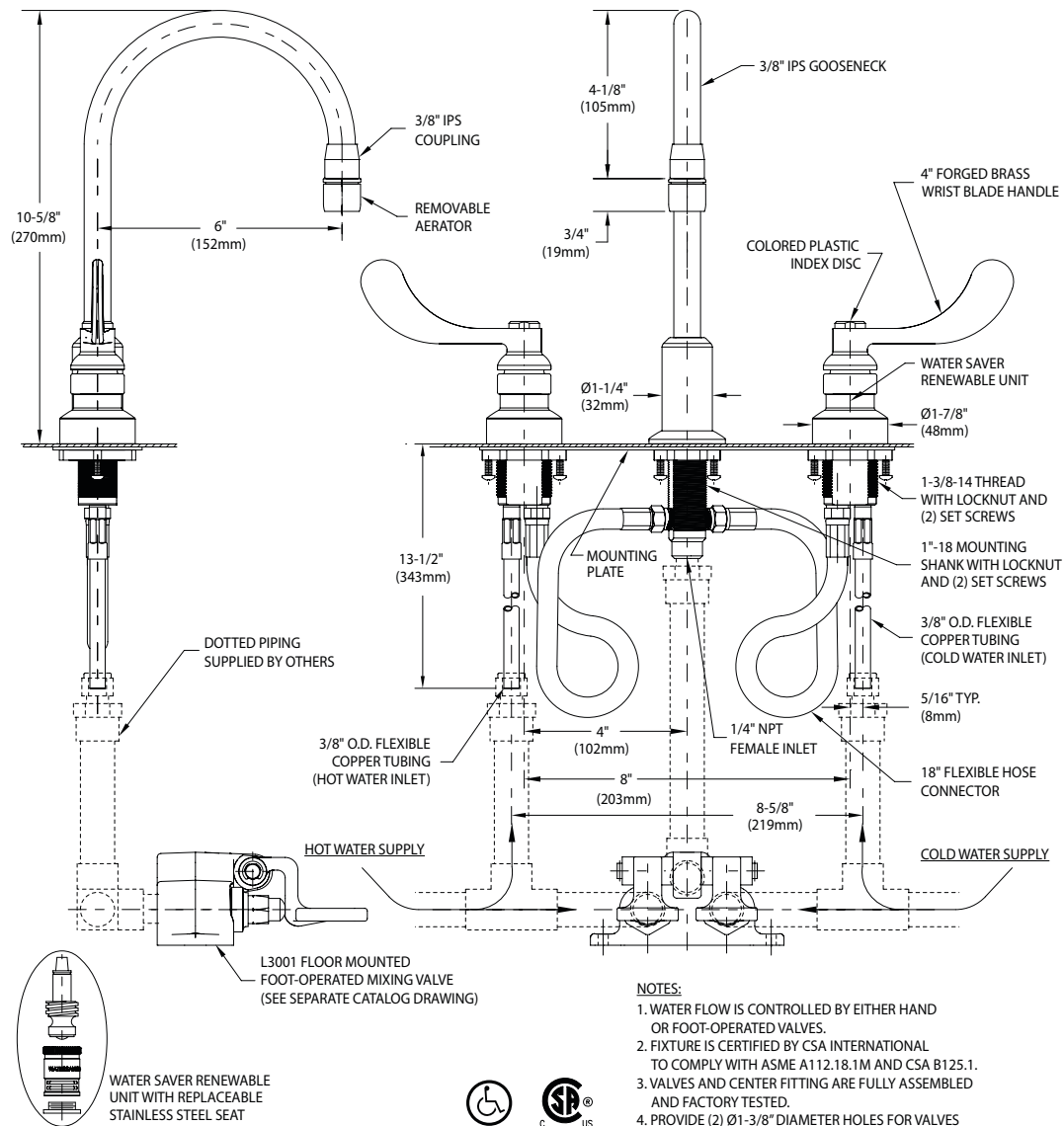
- ☐ **L2221VB** Laboratory Mixing Faucet, Deck Mounted, 6" Rigid Vacuum Breaker Gooseneck, Aerator, Wrist Blade Handles
- ☐ **L2222VB** Same as above except with Swing Vacuum Breaker Gooseneck
- ☐ **L2224VB** Same as above except with Rigid/Swing Vacuum Breaker Gooseneck



THIS SPACE FOR ARCHITECT/ENGINEER APPROVAL

Due to continuing product improvement, the information contained in this document is subject to change without notice. All dimensions are $\pm 1/4"$ (6mm). Rev. 122619

- ☐ **L2221TWI-3001** Laboratory Mixing Faucet, Deck Mounted, 6" Rigid Gooseneck, Aerator, Wrist Blade Handles, Foot-Operated Mixing Valve
- ☐ **L2222TWI-3001** Same as above except with Swing Gooseneck
- ☐ **L2224TWI-3001** Same as above except with Rigid/Swing Gooseneck

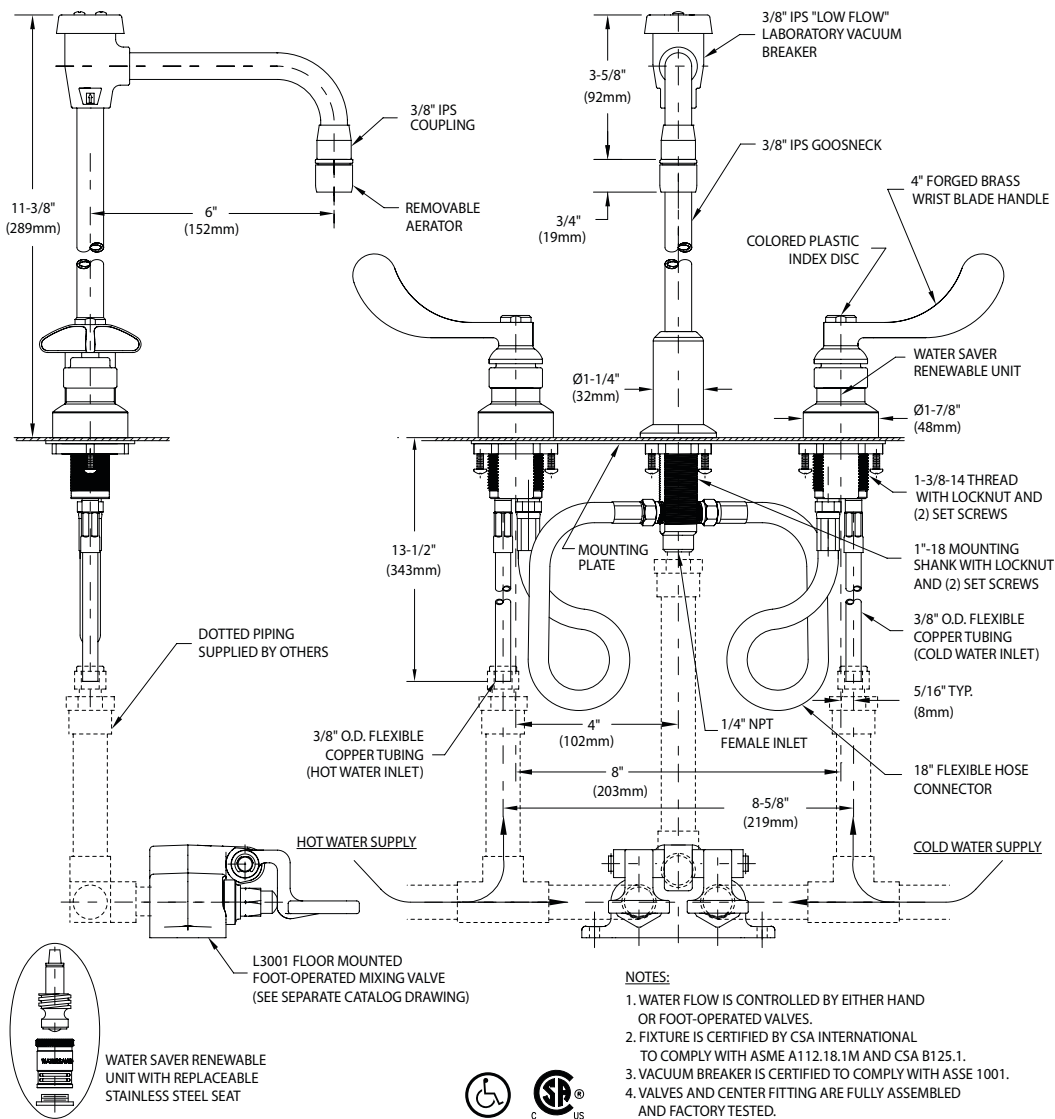


THIS SPACE FOR ARCHITECT/ENGINEER APPROVAL

Due to continuing product improvement, the information contained in this document is subject to change without notice. All dimensions are $\pm 1/4"$ (6mm). Rev. 122619



- ☐ **L2221TWI-VB-3001** Laboratory Mixing Faucet, Deck Mounted, 6" Rigid Vacuum Breaker Gooseneck, Aerator, Wrist Blade Handles, Foot-Operated Mixing Valve
- ☐ **L2222TWI-VB-3001** Same as above except with Swing Vacuum Breaker Gooseneck
- ☐ **L2224TWI-VB-3001** Same as above except with Rigid/Swing Vacuum Breaker Gooseneck



NOTES:

1. WATER FLOW IS CONTROLLED BY EITHER HAND OR FOOT-OPERATED VALVES.
2. FIXTURE IS CERTIFIED BY CSA INTERNATIONAL TO COMPLY WITH ASME A112.18.1M AND CSA B125.1.
3. VACUUM BREAKER IS CERTIFIED TO COMPLY WITH ASSE 1001.
4. VALVES AND CENTER FITTING ARE FULLY ASSEMBLED AND FACTORY TESTED.
5. PROVIDE (2) Ø1-3/8" DIAMETER HOLES FOR VALVES AND (1) Ø1-1/32" HOLE FOR CENTER FITTING.



THIS SPACE FOR ARCHITECT/ENGINEER APPROVAL

Due to continuing product improvement, the information contained in this document is subject to change without notice. All dimensions are $\pm 1/4"$ (6mm). Rev. 122619