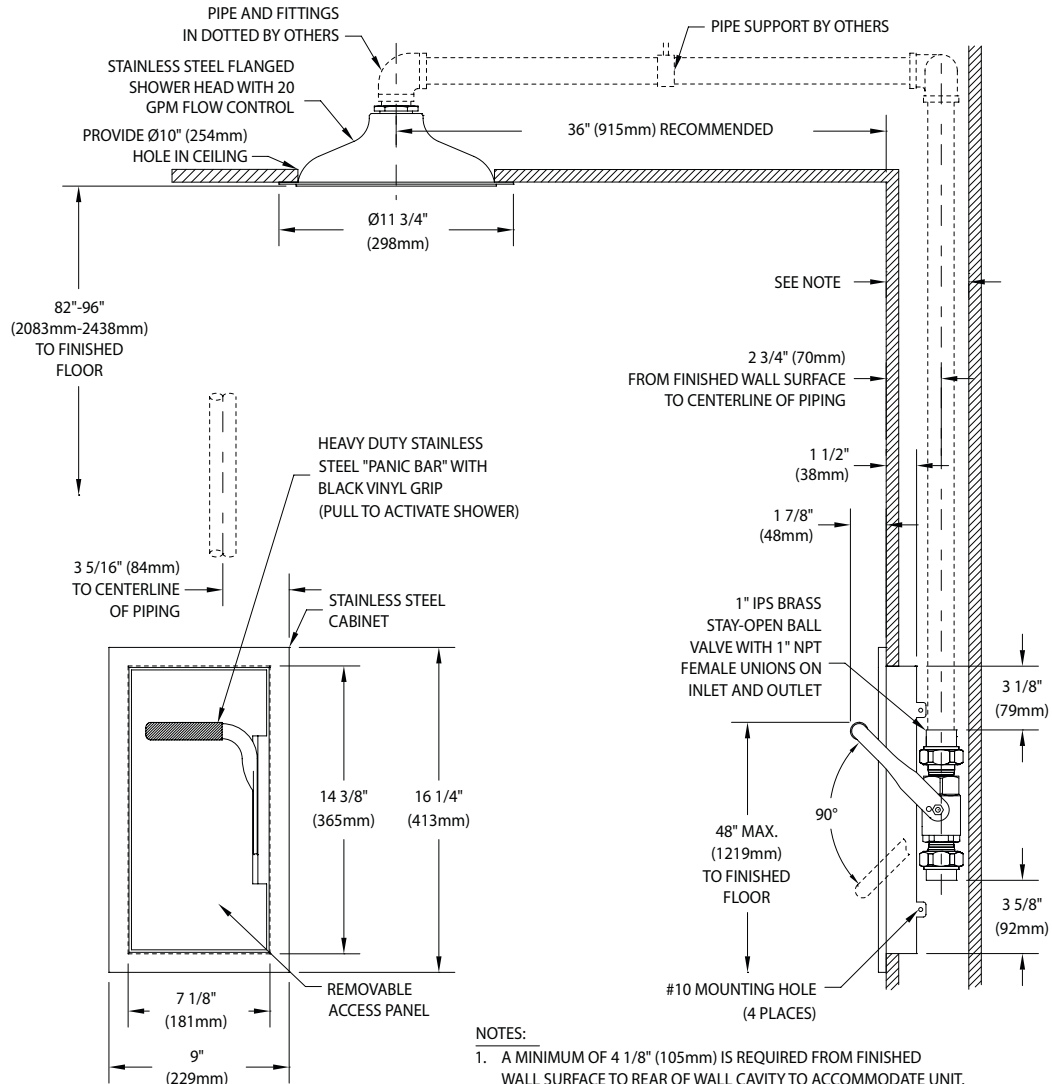


**ESBF671** Recessed Emergency Shower, Recess Mounted Shower Head



**NOTES:**

1. A MINIMUM OF 4 1/8" (105mm) IS REQUIRED FROM FINISHED WALL SURFACE TO REAR OF WALL CAVITY TO ACCOMMODATE UNIT.
2. STANDARD DIMENSION FROM SHOWER HEAD TO WALL IS 24" (610mm). WHEN UNIT IS USED IN BARRIER-FREE APPLICATIONS, DIMENSION SHOULD BE 36" (915mm).
3. CABINET IS 16 GAUGE TYPE 304 STAINLESS STEEL WITH #4 BRUSHED SATIN FINISH.
4. PROVIDE 7 1/4" (184mm) X 14 1/2" (368mm) CUTOUT IN WALL FOR HOUSING INSTALLATION.
5. TRIM PIECE MUST BE FRAMED IN THE WALL.

THIS SPACE FOR ARCHITECT/ENGINEER APPROVAL

Sign Included



Due to continuing product improvement, the information contained in this document is subject to change without notice. All dimensions are ± 1/4" (6mm). rev. 021920

