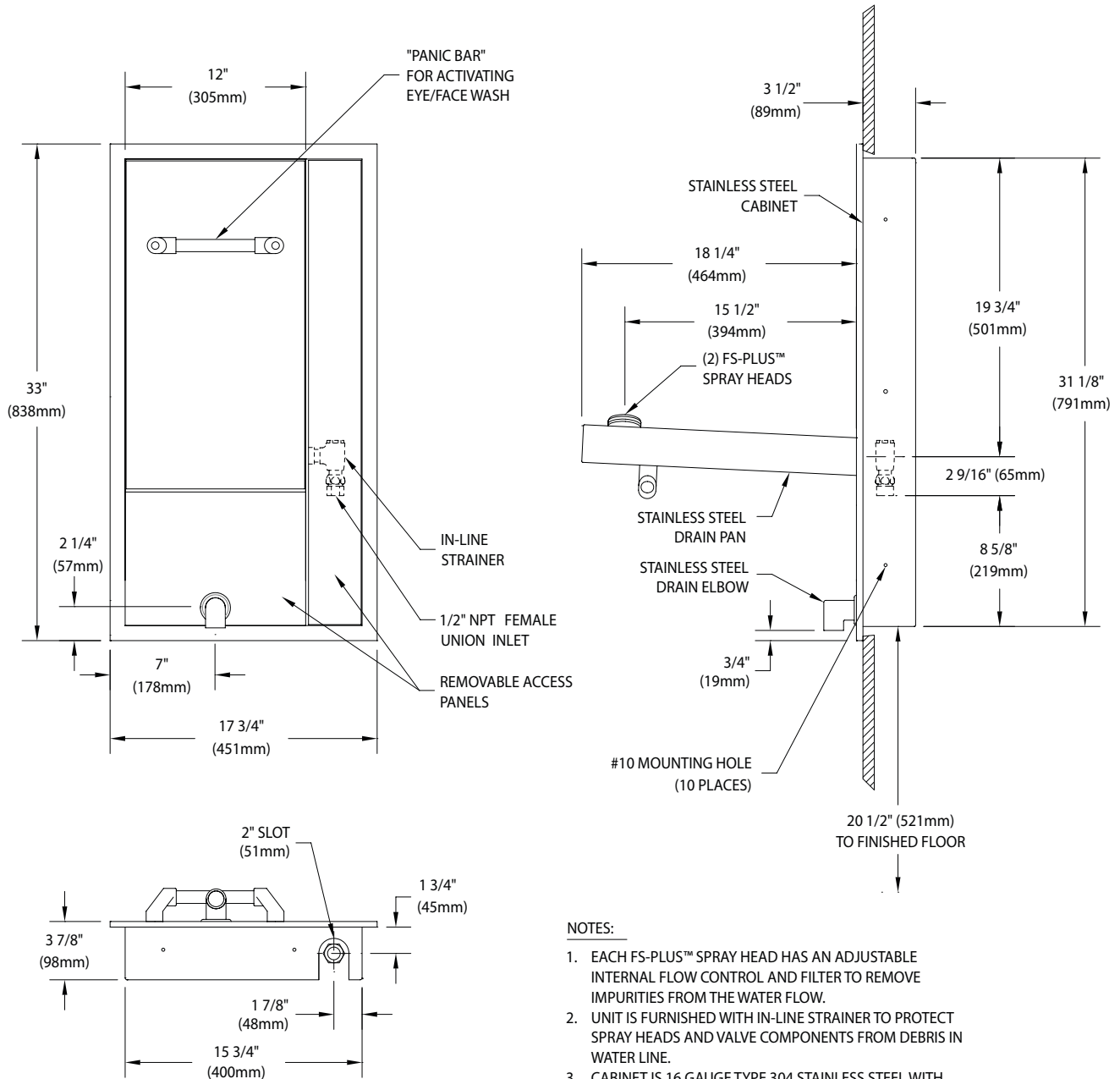


FEBF735FDP Swing-Down Eye/Face Wash with Drain Pan and Daylight Drain, Recess Mounted



NOTES:

1. EACH FS-PLUS™ SPRAY HEAD HAS AN ADJUSTABLE INTERNAL FLOW CONTROL AND FILTER TO REMOVE IMPURITIES FROM THE WATER FLOW.
2. UNIT IS FURNISHED WITH IN-LINE STRAINER TO PROTECT SPRAY HEADS AND VALVE COMPONENTS FROM DEBRIS IN WATER LINE.
3. CABINET IS 16 GAUGE TYPE 304 STAINLESS STEEL WITH #4 BRUSHED SATIN FINISH.
4. INLET CAN BE POSITIONED TO SUPPLY UNIT FROM TOP OR BOTTOM.

THIS SPACE FOR ARCHITECT/ENGINEER APPROVAL

Sign Included



Due to continuing product improvement, the information contained in this document is subject to change without notice. All dimensions are ± 1/4" (6mm). rev. 021920

