

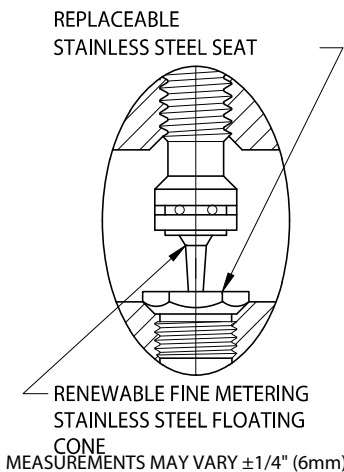
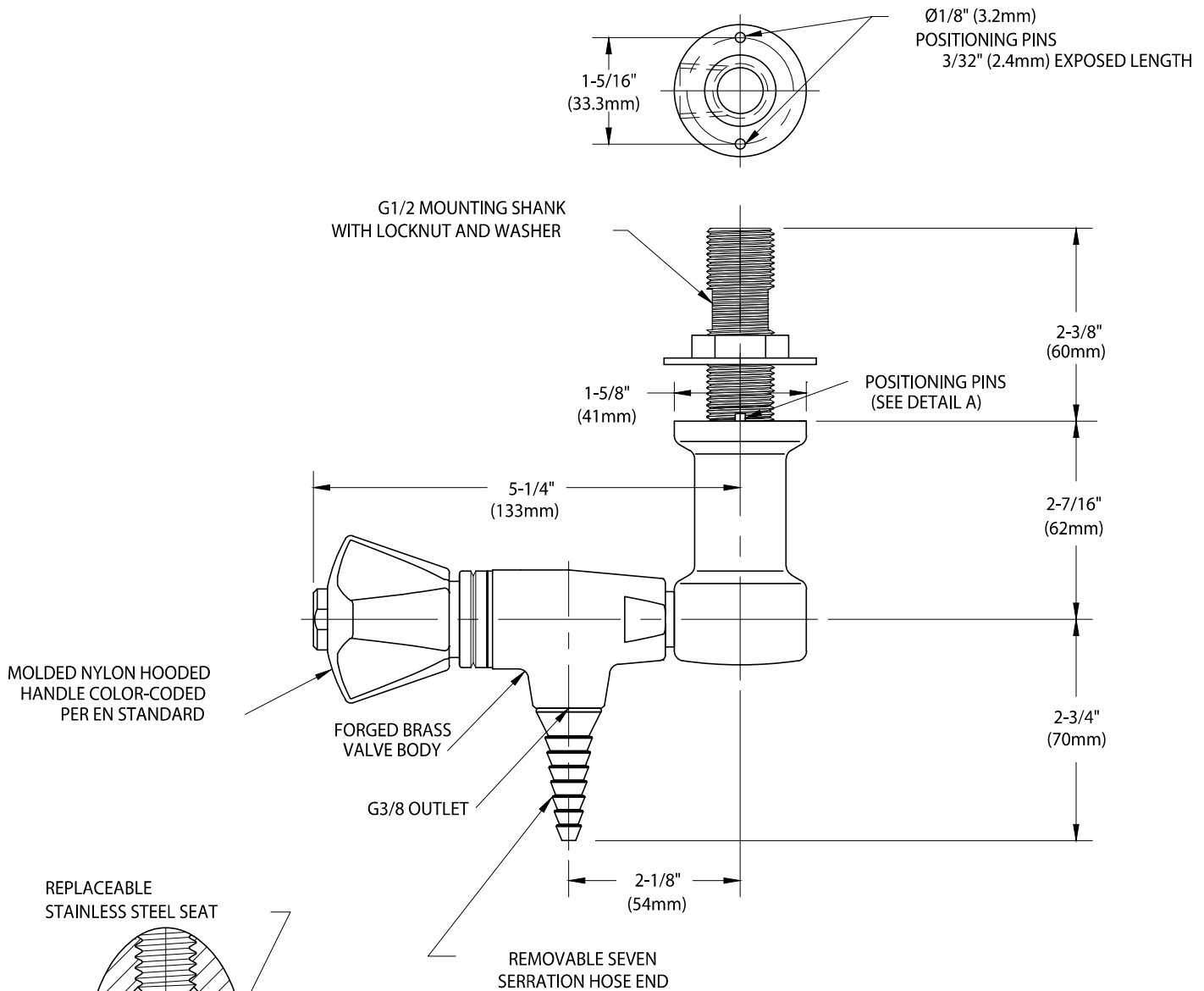


WaterSaver

ColorTech BT

BT3170-231WSA

LABORATORY FINE CONTROL NEEDLE VALVE FITTING, OVERHEAD MOUNTED SINGLE



- NOTES:**
1. FITTING IS CLEANED, DEGREASED AND PACKED FOR HIGH PURITY GAS SERVICE.
 2. FITTING IS FACTORY ASSEMBLED AND TESTED AT 375 PSI (26 BAR). MAXIMUM WORKING PRESSURE IS 250 PSI (17 BAR).
 3. FITTING HAS COLORTECH EPOXY POWDER COATED FINISH. SPECIFY COLOR (WHITE, GRAY OR TAN) WHEN ORDERING.

MEASUREMENTS MAY VARY $\pm 1/4$ " (6mm).

WaterSaver Faucet Co. 312 666 5500 t
701 West Erie Street 312 666 5501 f
Chicago, IL 60654 wsflab.com

Drawing Number:

Revised: 022013-TEC