

ES627 Emergency Shower, Recess Mounted, Stainless Steel Shower Head



Application: Emergency shower for recess mounting in a finished ceiling or soffit. Shower is activated by dual on/off pull chains.

Shower Head: 10" diameter with flange for flush mounting in ceiling. Shower head is stainless steel with stainless steel face plate.

Valve: 1" IPS brass stay-open ball valve. Valve is US-made with chrome plated brass ball and Teflon® seals. Furnished with stainless steel actuating arm, dual on/off pull chains with rings and ceiling ferrules.

Pipe and Fittings: 1" IPS galvanized steel.

Supply: 1" NPT female inlet.

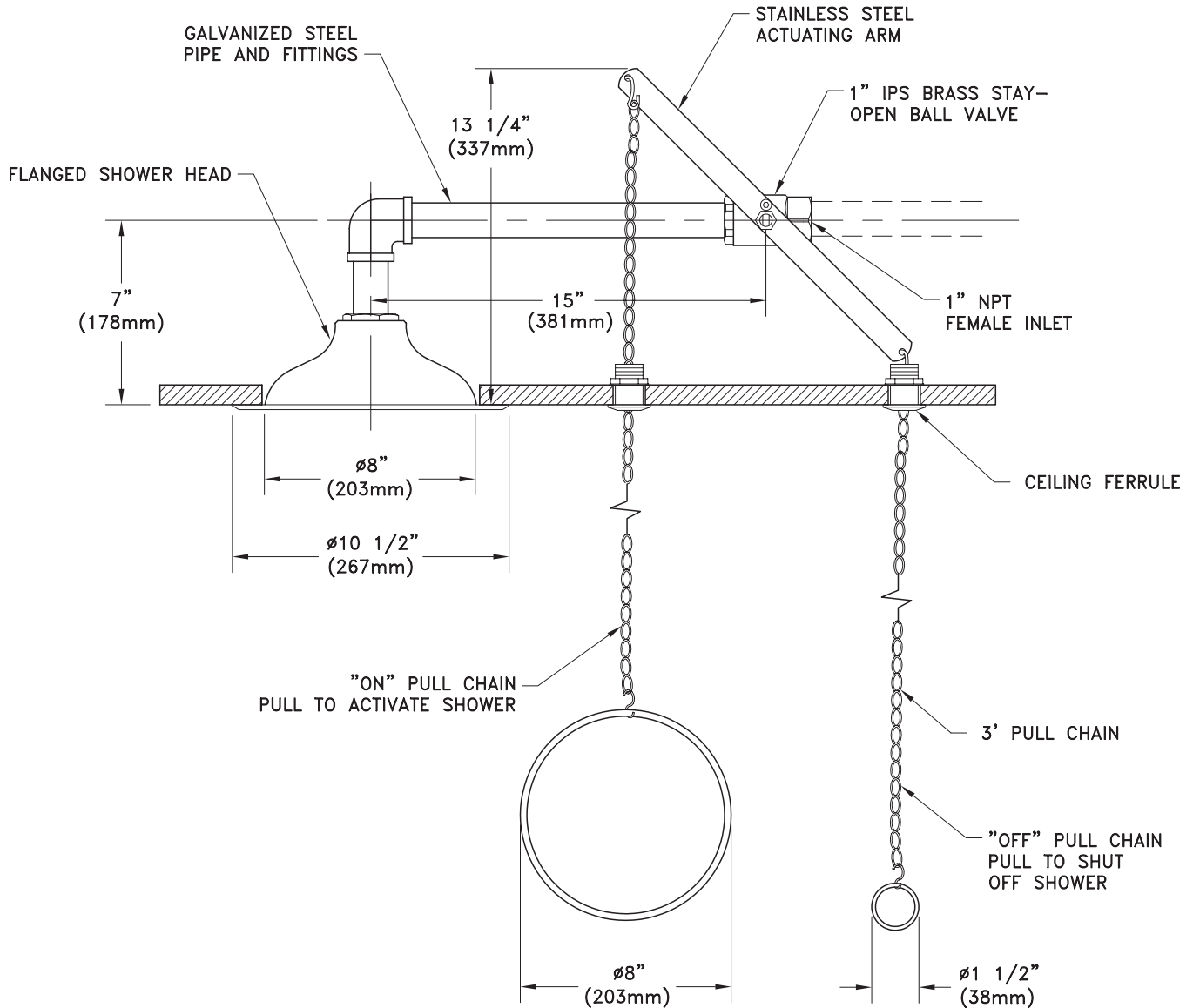
Sign: ANSI-compliant identification sign.

Note: ANSI Z358.1-2014 provides that shower heads be installed no more than 96" above the finished floor. This unit should therefore not be installed in ceilings over 8 feet. For higher ceiling heights, we recommend the ES658 shower.

Available Options

- FC20** Regulates shower flow rate to 20 GPM.
- TMV** AP3800 thermostatic mixing valve precisely blends hot and cold water to deliver warm (tepid) water as required by ANSI Z358.1-2014. Refer to "Tempering Units" section for complete technical and product selection information.
- AP280-230 ELECTRIC LIGHT AND ALARM HORN**
Flashing light/alarm horn unit is recess mounted in finished wall. Light is illuminated and horn sounds when shower is activated. Furnished complete with flow switch and mounting hardware.

ES627 Emergency Shower, Recess Mounted, Stainless Steel Shower Head



NOTE:
UNIT IS DESIGNED FOR MOUNTING IN 8 FT. CEILING

THIS SPACE FOR ARCHITECT/ENGINEER APPROVAL

Due to continuing product improvement, the information contained in this document is subject to change without notice. All dimensions are ± 1/4" (6mm). rev. 0315

Sign Included

