

SSBF2173 Recessed Safety Station with Drain Pan, Surface Mounted

Application: Barrier-free eye/face wash and shower safety station for surface mounting. Unit is ideal for use on concrete masonry unit (CMU) and other walls that cannot be penetrated. Unit has exposed shower head and swing-down eye/face wash with drain pan. Stainless steel cover provides attractive appearance and protects unit when not in use. When activated, cover serves as pan to collect waste water and return it into unit for drainage. Rather than connecting to building drainage system, unit has 1-1/2" OD drain connection on front of unit for waste water. Front drain eliminates need for connection to drainage system while facilitating regular testing of unit.

ADA Compliance: When installed at recommended mounting heights, unit complies with ADA requirements for accessibility by handicapped persons.

Shower Head: 10" diameter stainless steel.

Shower Valve: 1" IPS brass stay-open ball valve with stainless steel "panic bar" actuator.

Cover/Drain Pan: 16 gauge stainless steel combination cover and drain pan. Grasping "panic bar" handle and opening cover pulls spray head assembly down from vertical to horizontal position, activating water flow. While unit is in operation, waste water is collected in drain pan and returned into cabinet for drainage. Unit remains in operation until cover is returned to closed position.

Eye/Face Wash Spray Head Assembly: Two FS-Plus™ spray heads mounted on supply arms. Each spray head has individually adjustable flow control and filter to remove impurities from water.

Eye/Face Wash Valve: 1/2" IPS brass plug-type valve with O-ring seals. Furnished with in-line strainer to protect valve from debris and foreign matter.

Mounting: 16 gauge stainless steel cabinet for surface mounting on wall.

Pipe and Fittings: Exposed pipe and fittings are brushed stainless steel.

Supply: 1" NPT female inlet.

Waste: 1 1/2" O.D. tailpiece on front of unit with hinged stainless steel cover.

Sign: Furnished with ANSI-compliant identification sign.

Quality Assurance: Unit is completely assembled and water tested prior to shipment.

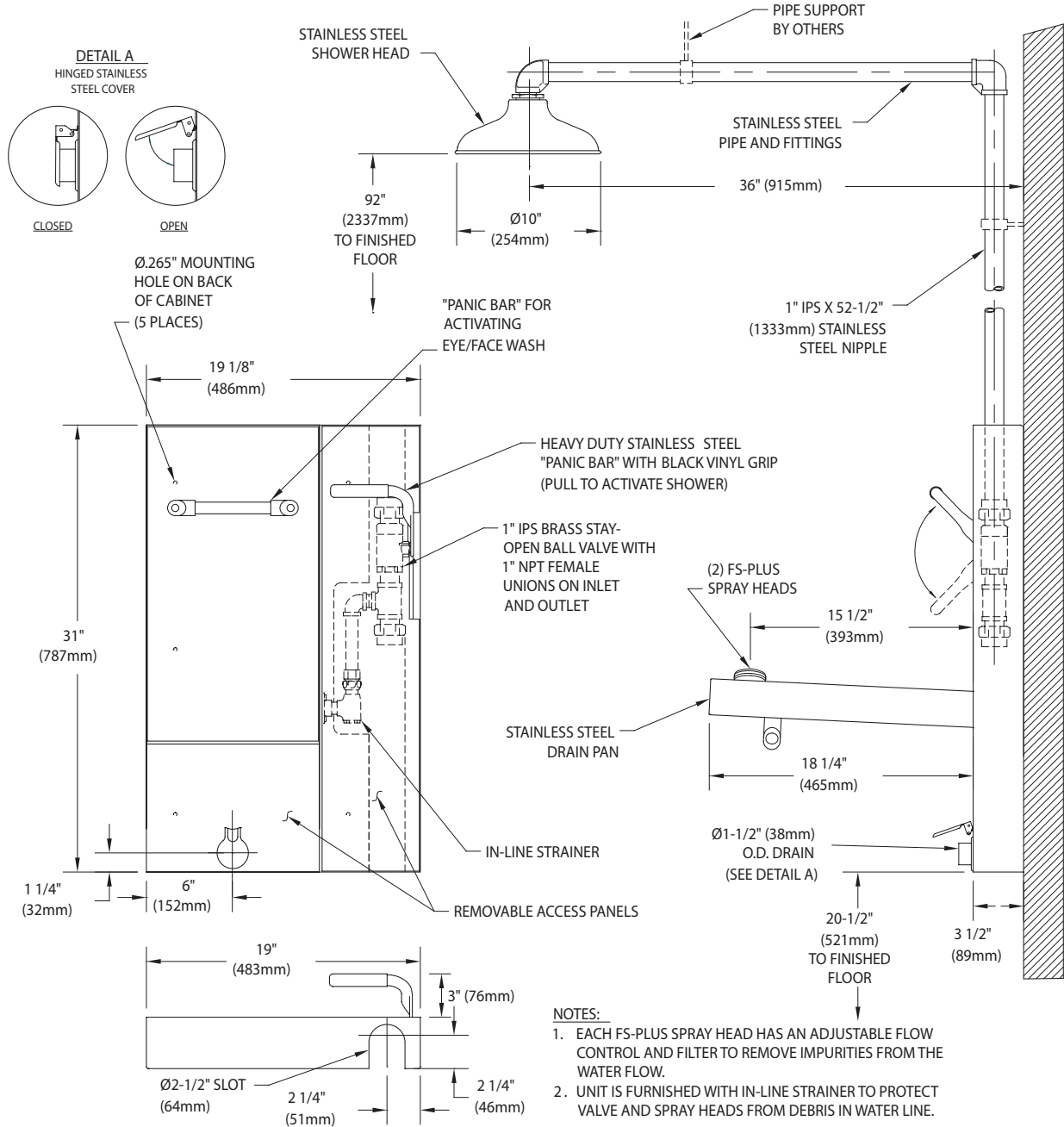
U.S. Patent 5,768,721

Available Options

- PCC** Polished chrome plated brass shower supply nipple.
- AP250-064** Test Kit
- AP250-065** Modesty Curtain
- TMV** AP3800 thermostatic mixing valve.



SSBF2173 Recessed Safety Station with Drain Pan, Surface Mounted



THIS SPACE FOR ARCHITECT/ENGINEER APPROVAL

Due to continuing product improvement, the information contained in this document is subject to change without notice. All dimensions are ± 1/4" (6mm). rev. 0315

Sign Included

