

VRFEBF721 Vandal-Resistant WideArea™ Eye/Face Wash, Barrier-Free, Wall Mounted



Application: WideArea™ eye/face wash with vandal-resistant construction. Ideal for use in schools and other areas where equipment may be subject to abuse. All threaded connections are secured with set screws or cement to prevent disassembly.

ADA Compliance: When installed at recommended mounting height, unit complies with ADA requirements for accessibility by handicapped persons (maximum height and reach, minimum knee clearance and distance from obstructions).

Spray Head Assembly: Four vandal-resistant GS-Plus™ spray heads. Each head has a brass body, stainless steel “flip top” dust cover, internal flow control and filter to remove impurities from the water flow. Spray heads have retaining ring with set screw to protect internal components.

Valve: 1/2" IPS brass stay-open ball valve. Valve is US-made with chrome plated brass ball and Teflon® seals.

Bowl: 11-1/2" stainless steel with wraparound skirt and bottom panel with one-way screws.

Mounting Bowl and skirt unit has welded stainless steel bracket for wall mounting.

Supply: 1/2" NPT female inlet.

Waste: 1-1/2" OD chrome plated brass tailpiece.

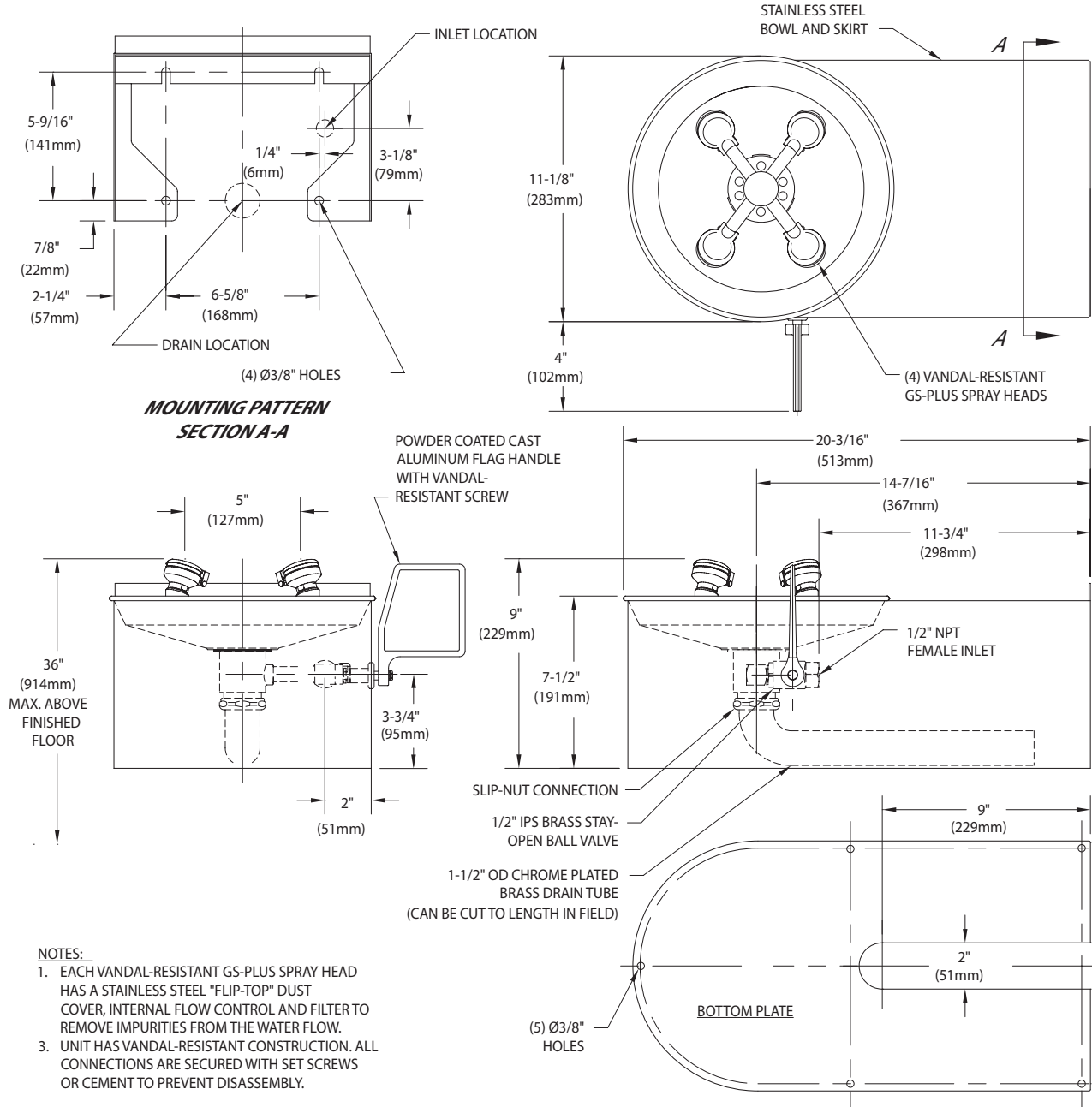
Sign: ANSI-compliant identification sign.

Quality Assurance: Unit is completely assembled and water tested prior to shipment.

Available Options

- SC** Self-closing ball valve. *Note: Eye/face washes with self-closing valves do not comply with ANSI Z358.1-2014.*
- T** Chrome plated brass tailpiece and trap with 1-1/2" IPS waste connection.
- TMV** AP3600 thermostatic mixing valve precisely blends hot and cold water to deliver warm (tepid) water as required by ANSI Z358.1-2014. Refer to “Tempering Units” section for complete technical and product selection information.

VRFEBF721 Vandal-Resistant WideArea™ Eye/Face Wash, Barrier-Free, Wall Mounted



NOTES:

1. EACH VANDAL-RESISTANT GS-PLUS SPRAY HEAD HAS A STAINLESS STEEL "FLIP-TOP" DUST COVER, INTERNAL FLOW CONTROL AND FILTER TO REMOVE IMPURITIES FROM THE WATER FLOW.
3. UNIT HAS VANDAL-RESISTANT CONSTRUCTION. ALL CONNECTIONS ARE SECURED WITH SET SCREWS OR CEMENT TO PREVENT DISASSEMBLY.

THIS SPACE FOR ARCHITECT/ENGINEER APPROVAL

Due to continuing product improvement, the information contained in this document is subject to change without notice. All dimensions are ± 1/4" (6mm). rev. 0315

Sign Included



WaterSaver
701 W Erie St
Chicago, IL 60654

312 666 5500 TELEPHONE
312 666 5501 FACSIMILE
wsflab.com

Listed 8116. Units have been tested to and comply with ANSI Z358.1-2014 and the Uniform Plumbing Code.



ETL Listed 101496. Units have been tested to and comply with ANSI Z358.1-2014.

