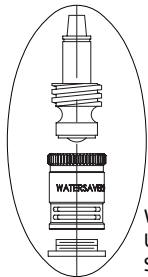
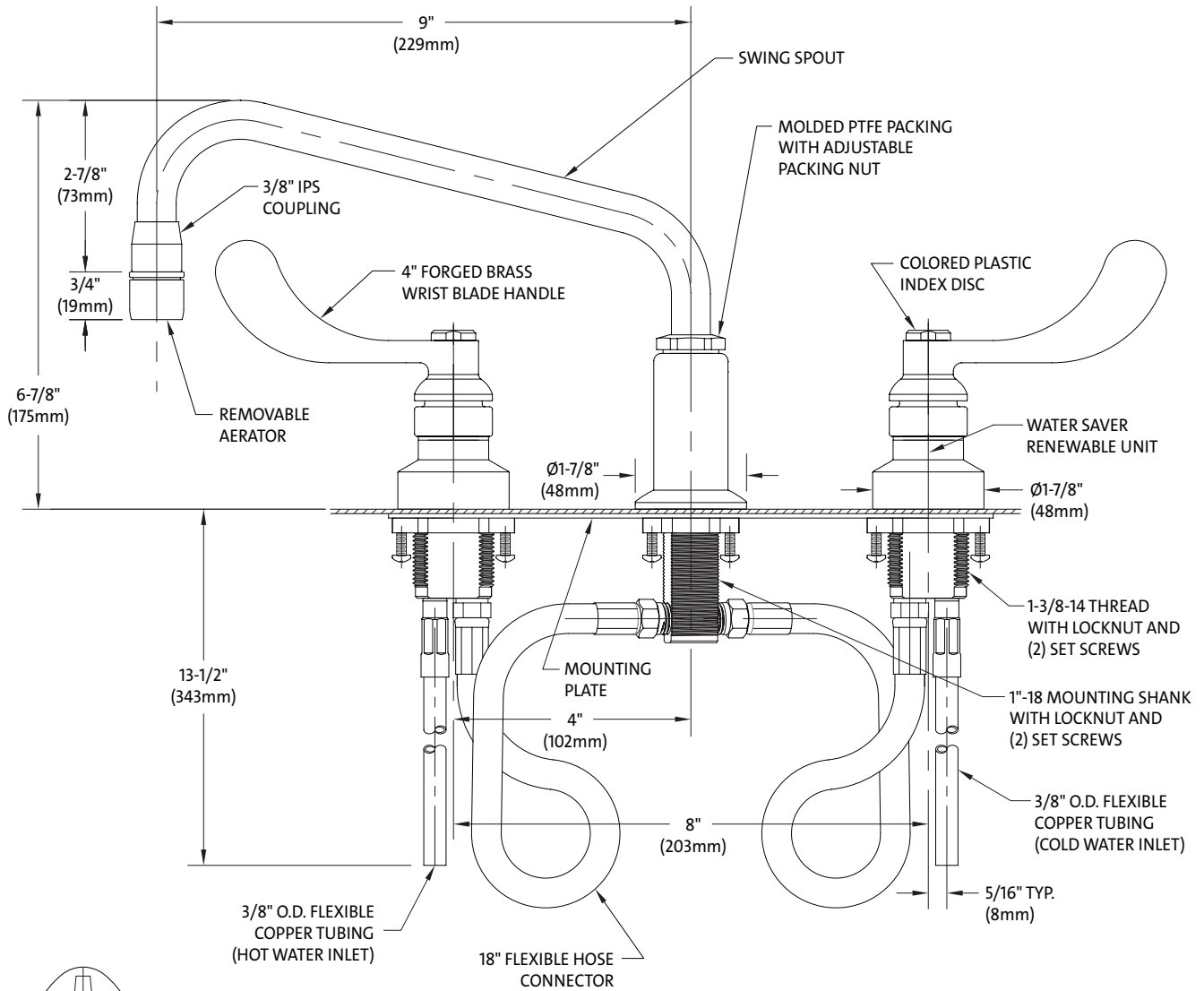


L2210BH Laboratory Mixing Faucet, Deck Mounted, 9" Swing Spout, Aerator, Wrist Blade Handles



WATER SAVER RENEWABLE UNIT WITH REPLACEABLE STAINLESS STEEL SEAT

NOTES:

1. VALVES AND CENTER FITTING ARE FULLY ASSEMBLED AND FACTORY TESTED.
2. FIXTURE IS CERTIFIED BY CSA INTERNATIONAL TO COMPLY WITH ASME A112.18.1M AND CSA B125.1.
3. PROVIDE (2) Ø1-3/8" HOLES FOR VALVES AND (1) Ø1-1/32" HOLE FOR CENTER FITTING.
4. FIXTURE HAS A POLISHED CHROME PLATED FINISH.



THIS SPACE FOR ARCHITECT/ENGINEER APPROVAL

Due to continuing product improvement, the information contained in this document is subject to change without notice. All dimensions are $\pm 1/4"$ (6mm). Rev. 051421