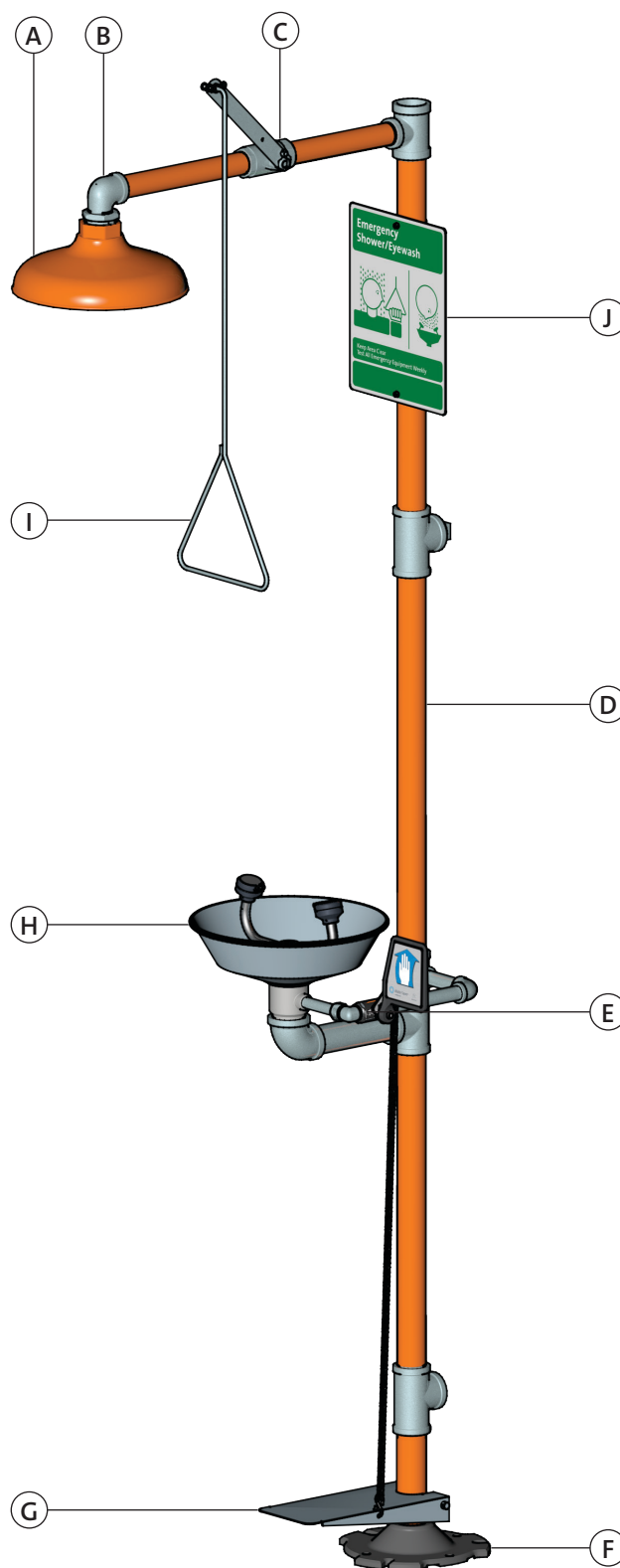


Item	Part Number	Description
Shower Heads		
A	AP450-032ORG-R	Orange ABS Plastic Shower Head with 20 GPM Flow Control and 1" Hex Bushing
	AP450-032GRN-R	Green ABS Plastic Shower Head with 20 GPM Flow Control and 1" Hex Bushing
	AP450-032YEL-R	Yellow ABS Plastic Shower Head with 20 GPM Flow Control and 1" Hex Bushing
	AP450-048	10" Dia. Stainless Steel Shower Head
Shower Head Elbow		
B	300-08SE	1" IPS Galvanized Steel Street Elbow
Shower Valve Assembly		
C	AP600-335H	1" IPS Chrome Plated Brass Stay-Open Ball Valve, Single Activation. Furnished with stainless steel actuating arm.
Galvanized Pipe Pack		
D	AP500-100	Galvanized Steel Pipe Pack for Units with Eyewash Bowl
	AP530-100	Orange Pipe Covers
Eyewash Valve Assemblies		
E	AP600-101H	1/2" IPS Chrome Plated Brass Stay-Open Ball Valve with Powder Coated Aluminum Flag Handle
	AP600-101HFC-H	1/2" IPS Chrome Plated Brass Stay-Open Ball Valve with Powder Coated Aluminum Flag Handle for Units with Hand/Foot Control
F	150-032	Powder Coated Cast Aluminum Floor Flange, 1-1/4" NPT Female Connection
G	AP050-010	Stainless Steel Foot Treadle and Return Spring with Aluminum Clevis Pin
H	See Page 2	Eyewash and Eye/Face Wash Assemblies
Shower Pull Rod		
I	AP050-079	29" Stainless Steel Pull Rod
Sign		
J	AP250-008W	Emergency Safety Station Sign



Item	Part Number	Description
------	-------------	-------------

Spray Heads

A	AP470-001W	GS-Plus™ Spray Head Assy.
	AP470-021W	FS-Plus™ Spray Head Assy.

Outlet Assemblies

B	AP470-100W-R	(2) GS-Plus™ Spray Heads with Chrome Plated Brass Fittings
	AP470-110W-R	(2) FS-Plus™ Spray Heads with Chrome Plated Brass Fittings
	AP470-120W-R	(4) GS-Plus™ Spray Heads with Chrome Plated Brass Fittings
	BI136-02-04	3/8" IPS X 2-1/4" Brass Shank

Item	Part Number	Description
------	-------------	-------------

Bowls

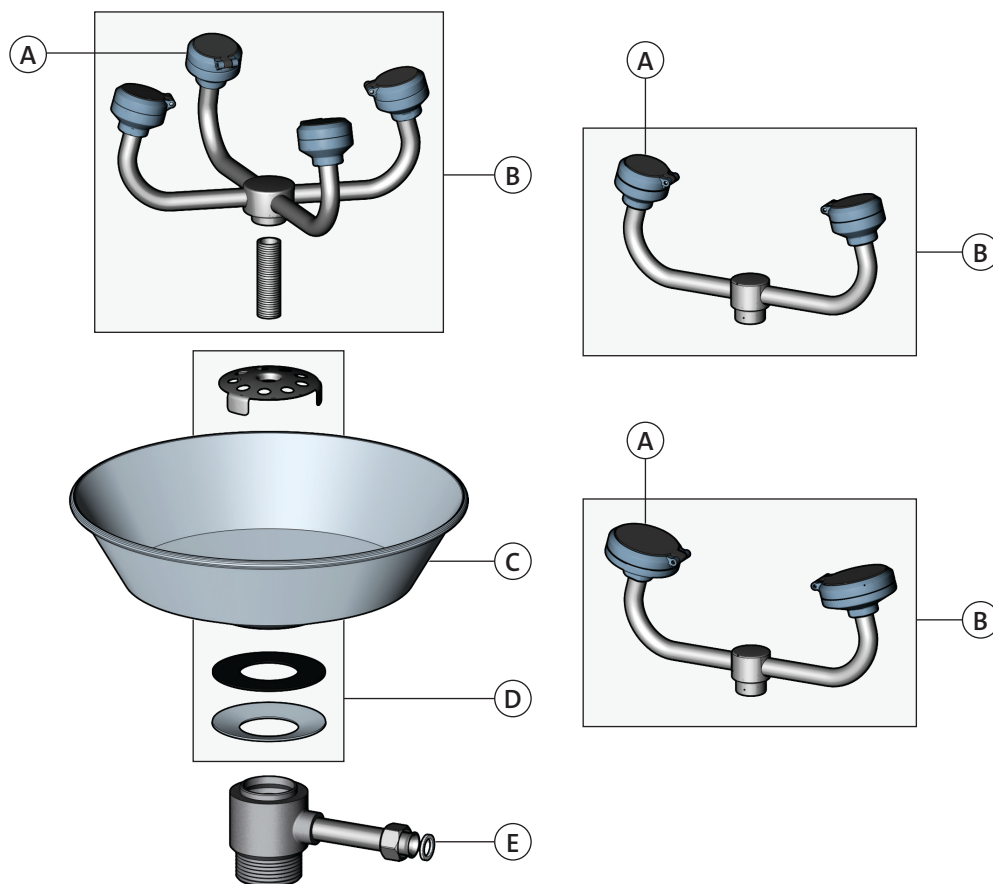
C	100-009ORG-R	Orange ABS Plastic Bowl
	100-009GRN-R	Green ABS Plastic Bowl
	100-009YEL-R	Yellow ABS Plastic Bowl
	100-008R	Stainless Steel Bowl
Note: Includes Cupped Washer and Gasket		

Drain Plate Assemblies

D	AP150-012A	Drain Plate Assembly for Plastic Bowls
	AP150-012B	Drain Plate Assembly for Stainless Steel Bowls
Note: Includes Drain Plate, Cupped Washer, and Gasket		

Waste Receptor

E	150-066-1R	Waste Receptor with Flared Nipple Coupling and Gasket, 1-1/2" NPT Male Outlet
---	------------	---

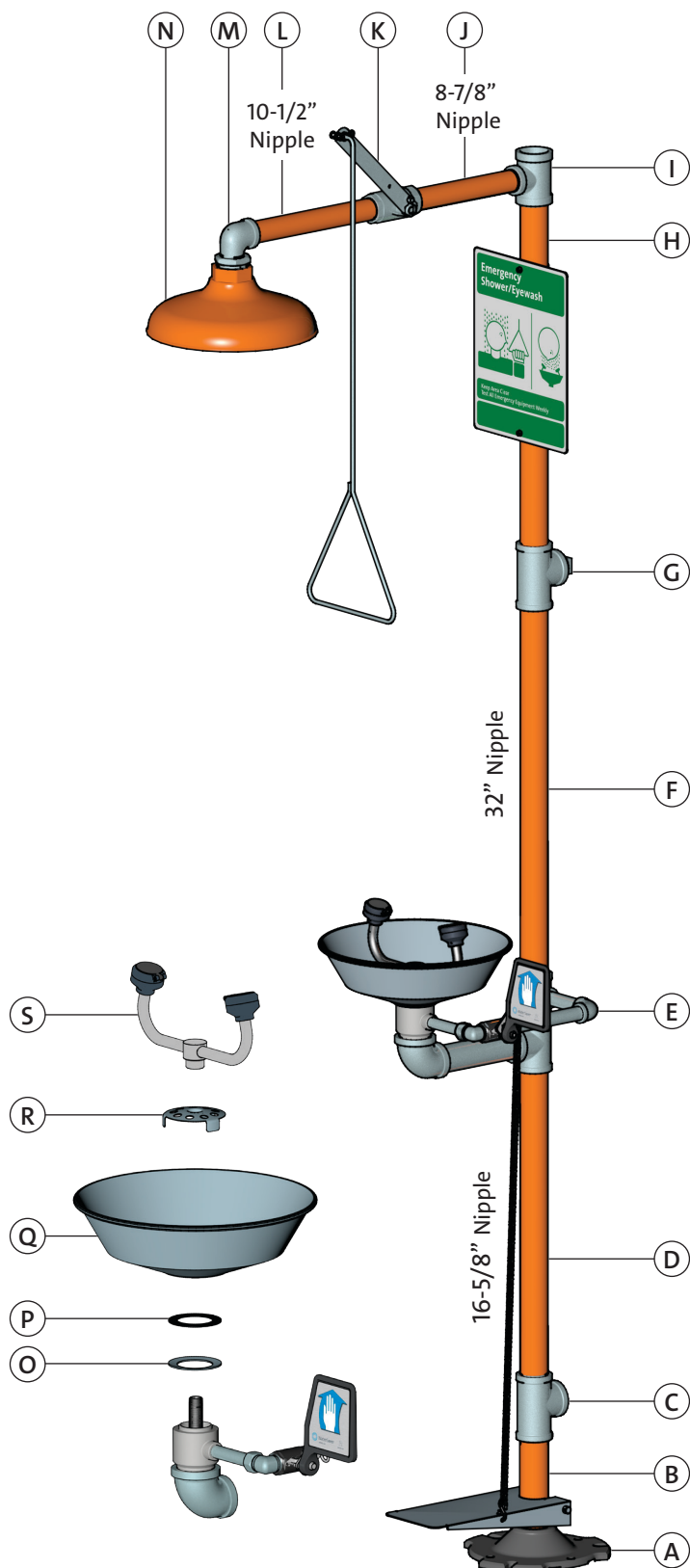


Safety stations are designed for easy assembly in the field. Essentially, these units are assembled from the “bottom up,” as described below:

1. Assemble floor flange (A), 1-1/4" IPS x 6-1/4" nipple (B), and plugged outlet tee (C). If unit has a foot treadle, the floor flange and treadle are pre-assembled. Position foot treadle for proper access by users, and tee for connection to drain. **IMPORTANT: Plugged tee (C) must be oriented with plugged end down to ensure proper drainage.**
2. Assemble 1-1/4" IPS x 16-5/8" nipple (D) and frame assembly (E). Position frame assembly for proper access by users.
3. Assemble 1-1/4" IPS x 32" nipple (F) and inlet tee (G). Position tee for connection to supply. If the top vertical inlet will be employed, plug tee with supplied 1-1/4" IPS square head plug.
4. Assemble 1-1/4" IPS x 22" nipple (H) and 1-1/4" x 1" IPS reducing inlet tee (I). Position tee forward for proper location of shower. If the back horizontal inlet will be employed, plug tee with supplied 1-1/4" IPS square head plug.
5. Assemble 1" IPS x 8-7/8" nipple (J), emergency shower valve (K), 1" IPS x 10-1/2" nipple (L), elbow (M), and shower head with hex bushing (N).
6. Place cupped, stainless steel washer (O), rubber gasket (P), and bowl (Q) onto waste receptor. Center components to ensure a watertight seal.
7. Thread drain plate (R) down onto mounting shank as far as possible. If necessary, rotate bowl clockwise to draw drain plate down onto mounting shank.
8. Thread eye or eye/face wash spray head assembly (S) onto mounting shank. Position outlet heads for proper access by user.
9. Secure entire unit to floor and/or wall for stability.
10. If unit has foot treadle, connect foot treadle chain to valve/handle assembly.
11. Attach orange plastic pipe covers and sign.

Notes:

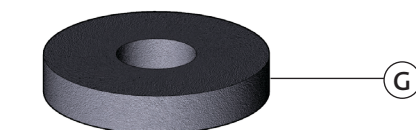
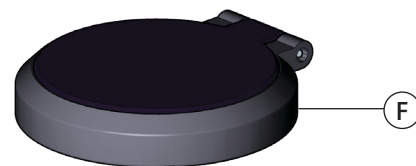
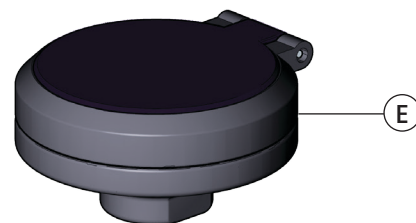
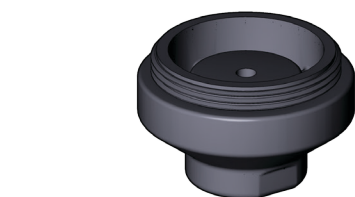
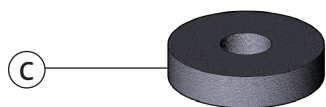
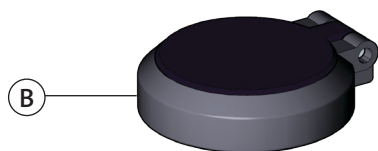
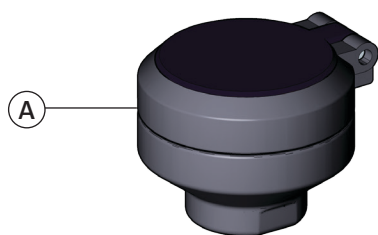
1. All threads are tapered pipe and require pipe joint compound or PTFE tape to ensure watertight connection.
2. If unit is furnished with corrosion-resistant powder coating, care must be taken to avoid damaging finish during assembly. For best results, a strap wrench should be used.
3. Test the entire unit for proper operation.
4. The use of dielectric unions is required when connecting to copper supply to avoid premature corrosion.



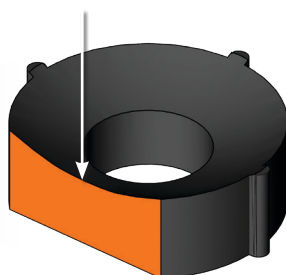
Each spray head features:

- Tough polypropylene plastic construction
- Highly visible integrated nylon dust cover
- Easily accessible 1.6 GPM (GS-Plus™) or 3.2 GPM (FS-Plus™) flow controls.
- Dense (60 pore per inch) polyurethane filter
- Unique design provides a consistently soft, full spray of water across a range of working pressures from 30 to 100 PSI

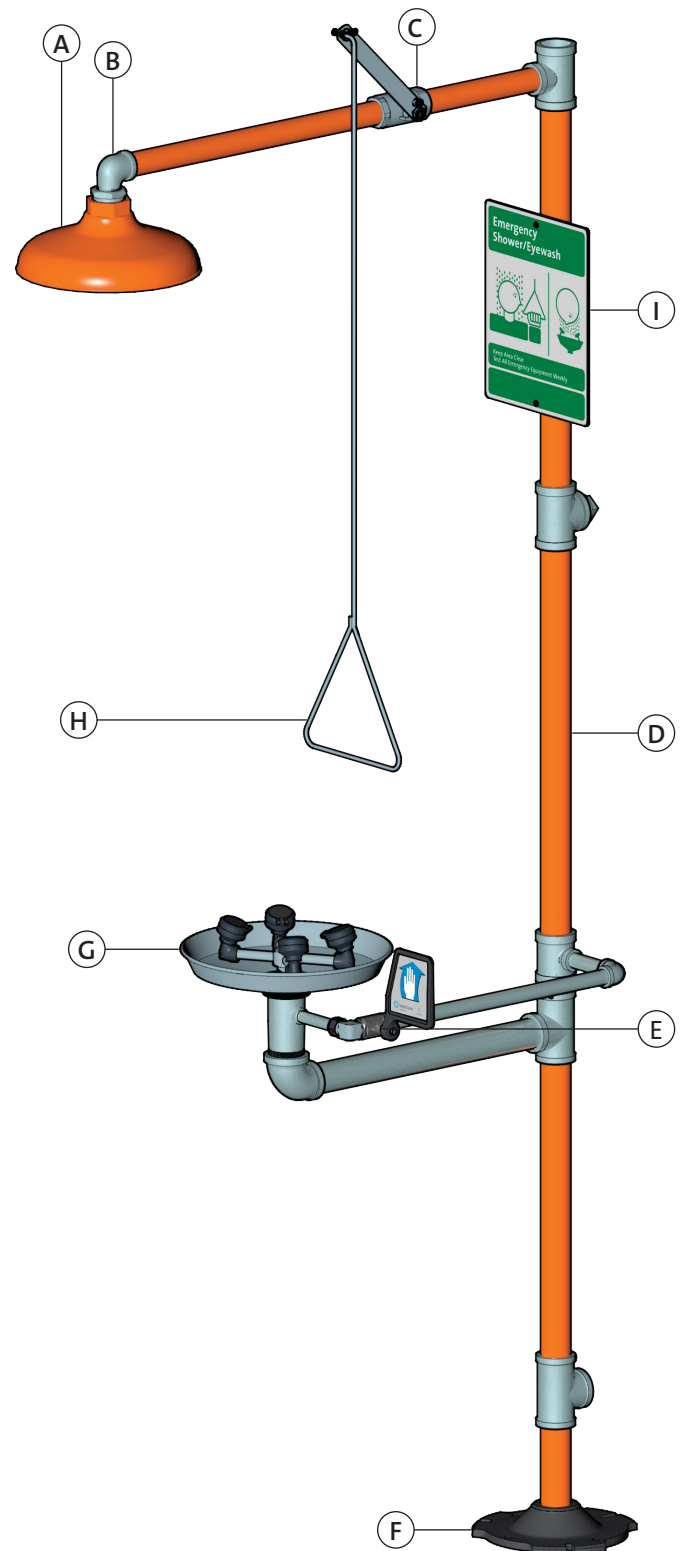
Item	Part Number	Description
A	AP470-001W	GS-Plus™ Spray Head (assembled)
B	AP470-002W-R	Dust Cover and Cap Assembly
C	470-004R	60 PPI Polyurethane Filter
D	470-005R	1.6 GPM Flow Control
E	AP470-021W	FS-Plus™ Spray Head (assembled)
F	AP470-022W-R	Dust Cover and Cap Assembly
G	470-024R	60 PPI Polyurethane Filter
H	470-025R	3.2 GPM Flow Control



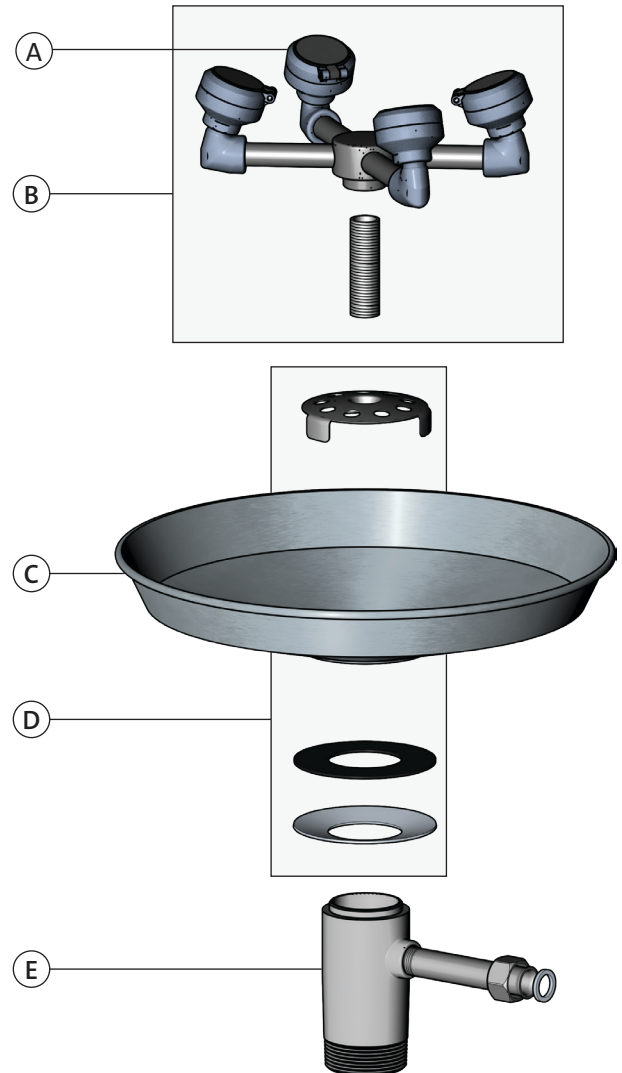
IMPORTANT
In order to operate properly,
the flow control must be
inserted into the body
concave end first.



Item	Part Number	Description
Shower Heads		
A	AP450-032ORG-R	Orange ABS Plastic Shower Head with 20 GPM Flow Control and 1" Hex Bushing
	AP450-032GRN-R	Green ABS Plastic Shower Head with 20 GPM Flow Control and 1" Hex Bushing
	AP450-032YEL-R	Yellow ABS Plastic Shower Head with 20 GPM Flow Control and 1" Hex Bushing
	AP450-048	10" Dia. Stainless Steel Shower Head
Shower Head Elbow		
B	300-08SE	1" IPS Galvanized Steel Street Elbow
Shower Valve Assembly		
C	AP600-335H	1" IPS Chrome Plated Brass Stay-Open Ball Valve, Single Activation. Furnished with stainless steel actuating arm.
Galvanized Pipe Pack		
D	AP500-170	Galvanized Steel Pipe Pack for Barrier-Free Units
	AP530-170	Orange Pipe Covers
Eyewash Valve Assembly		
E	AP600-101H	1/2" IPS Chrome Plated Brass Stay-Open Ball Valve with Powder Coated Aluminum Flag Handle
F	150-032	Powder Coated Cast Aluminum Floor Flange, 1-1/4" NPT Female Connection
G	See Page 2	Eye/Face Wash Assembly
Shower Pull Rod		
H	AP050-080	47-1/2" Stainless Steel Pull Rod
Sign		
I	AP250-008W	Emergency Safety Station Sign



Item	Part Number	Description
Spray Heads		
A	AP470-001W	GS-Plus™ Spray Head Assy.
Outlet Assembly		
B	AP470-127W-R	(4) GS-Plus™ Spray Heads with Chrome Plated Brass Fittings for Barrier-Free Units
	BI136-02	3/8" IPS X 2" Brass Shank
Bowl		
C	100-014R	Stainless Steel Bowl for Barrier-Free Units
Note: Includes Cupped Washer and Gasket		
Drain Plate Assembly		
D	AP150-012B	Drain Plate Assembly for Stainless Bowls
	Note: Includes Drain Plate, Cupped Washer and Gasket	
Waste Receptor		
E	150-066-1R	Waste Receptor with Flared Nipple Coupling and Gasket, 1-1/2" NPT Male Outlet

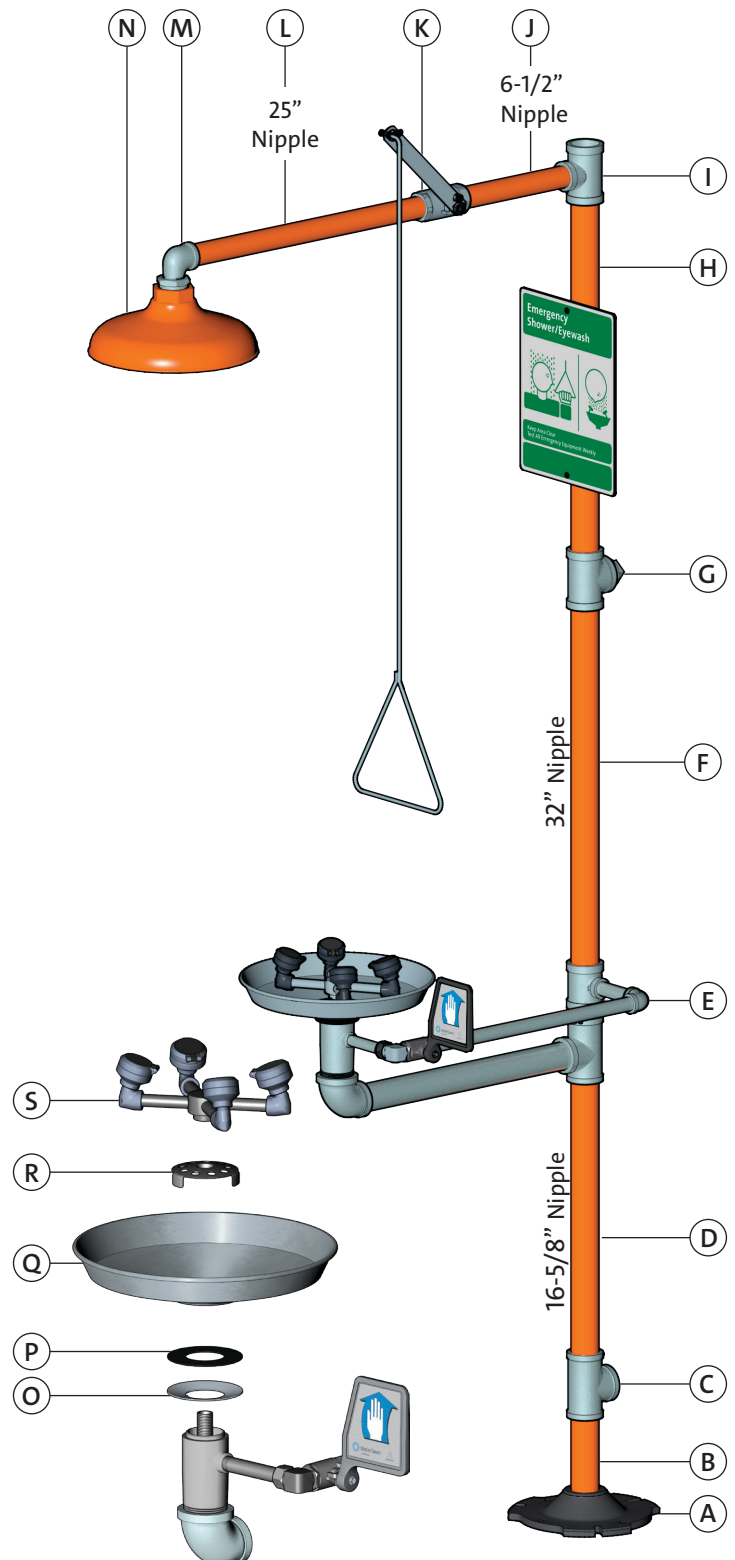


Safety stations are designed for easy assembly in the field. Essentially, these units are assembled from the “bottom up”, as described below:

1. Assemble floor flange (A), 1-1/4" IPS x 6-1/4" nipple (B), and plugged outlet tee (C). If unit has a foot treadle, the floor flange and treadle are pre-assembled. Position foot treadle for proper access by users, and tee for connection to drain. **IMPORTANT: Plugged tee (C) must be oriented with plugged end down to assure proper drainage.**
2. Assemble 1-1/4" IPS x 16-5/8" nipple (D) and frame assembly (E). Position frame assembly for proper access by users.
3. Assemble 1-1/4" IPS x 32" nipple (F) and inlet tee (G). Position tee for connection to supply. If the top vertical inlet will be employed, plug tee with supplied 1-1/4" IPS square head plug.
4. Assemble 1-1/4" IPS x 22" nipple (H) and 1-1/4" x 1" IPS reducing inlet tee (I). Position tee forward for proper location of shower. If the back horizontal inlet will be employed, plug tee with supplied 1-1/4" IPS square head plug.
5. Assemble 1" IPS x 6-1/2" nipple (J), emergency shower valve (K), 1" IPS x 25" nipple (L), elbow (M), and shower head with hex bushing (N).
6. Place cupped, stainless steel washer (O), rubber gasket (P), and bowl (Q) onto waste receptor. Center components to assure a watertight seal.
7. Thread drain plate (R) down onto mounting shank as far as possible. If necessary, rotate bowl clockwise to draw drain plate down onto mounting shank.
8. Thread eye/face wash spray head assembly (S) onto mounting shank. Position outlet heads for proper access by user.
9. Secure entire unit to floor and/or wall for stability.
10. Attach orange plastic pipe covers and sign.

Notes:

1. All threads are tapered pipe and require pipe joint compound or PTFE tape to assure watertight connection.
2. If unit is furnished with corrosion-resistant powder coating, care must be taken to avoid damaging finish during assembly. For best results, a strap wrench should be used.
3. Test the entire unit for proper operation.
4. The use of dielectric unions is required when connecting to copper supply to avoid premature corrosion.



This WaterSaver product is equipped with GS-Plus™ spray heads. Each head features:

- Tough polypropylene plastic construction
- Highly visible integrated nylon dust cover
- Easily accessible 1.6 GPM flow control
- Dense (60 pore per inch) polyurethane filter
- Unique design provides a consistently soft, full spray of water across a range of working pressures from 30 to 100 PSI.

Item	Part Number	Description
A	AP470-001W	GS-Plus™ Spray Head (assembled)
B	AP470-002W-R	Dust Cover and Cap Assembly
C	470-004R	60 PPI Polyurethane Filter
D	470-005R	1.6 GPM Flow Control

