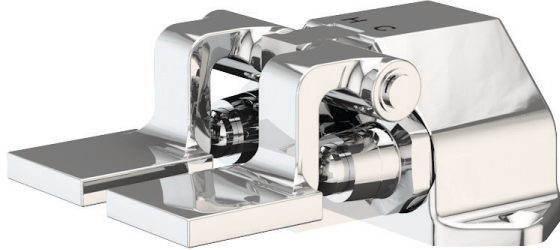


- ☐ **BT3001** Floor Mounted Foot-Operated Mixing Valve
- ☐ **BT3050** Floor Mounted Foot-Operated Single Valve



Application: Floor mounted foot-operated valve. BT3001 is a mixing valve for hot and cold water. BT3050 is a single valve for cold or tempered water only. The valve is furnished with a polished chrome plated finish.

Mounting: Floor mounted.

Body: Forged brass.

Headworks: Self-closing renewable units with stainless steel valve stems.

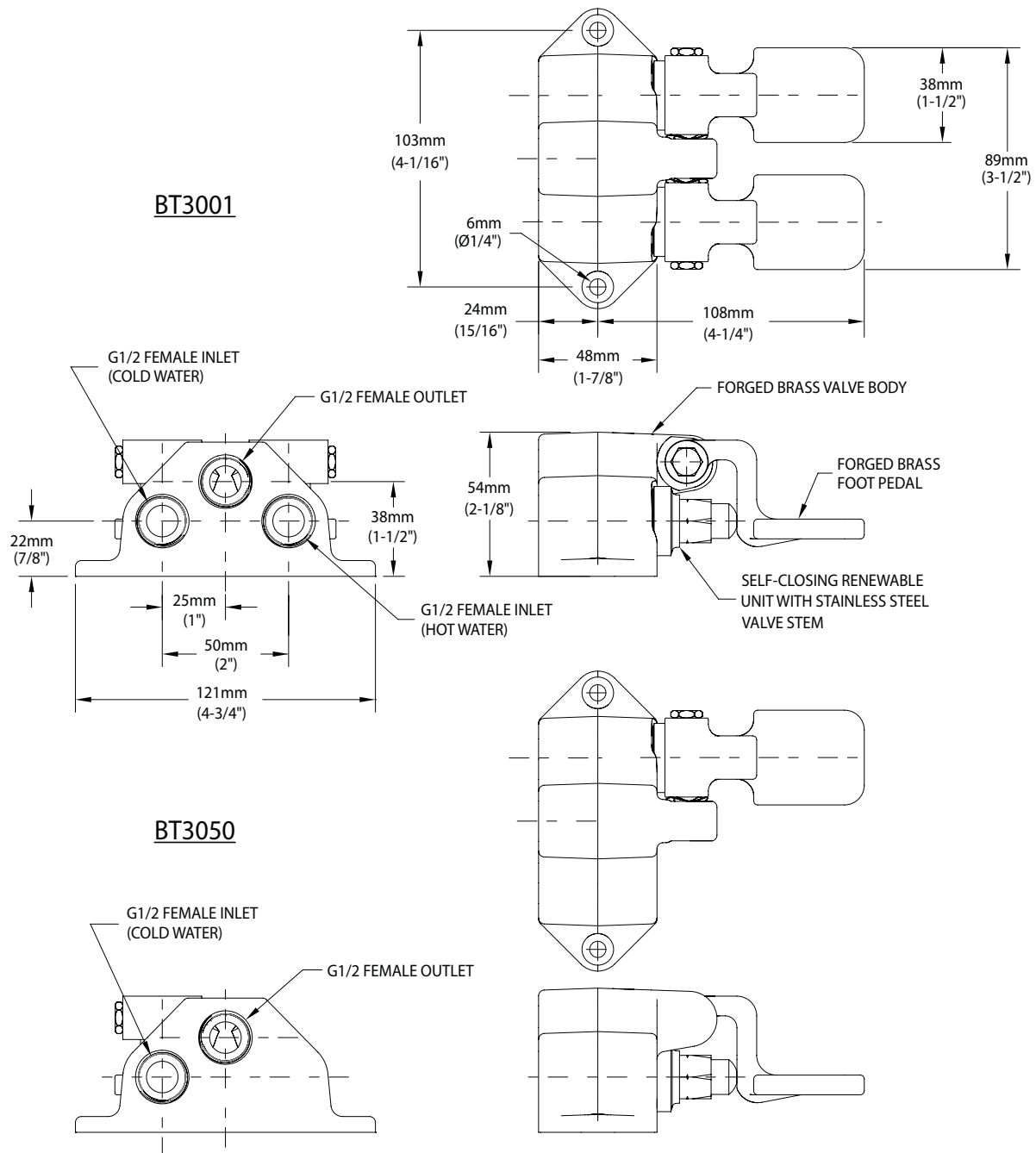
Pedals: Forged brass pedals mounted on hinged bracket.

Inlets: G1/2 female. BT3001 has two inlets. BT3050 has a single inlet.

Outlet: G1/2 female.

Quality Assurance: Valve is fully assembled and factory tested prior to shipment. 10 bar (150 PSI) test pressure and maximum working pressure.

- ☐ **BT3001** Floor Mounted Foot-Operated Mixing Valve
- ☐ **BT3050** Floor Mounted Foot-Operated Single Valve



NOTES:

1. FITTING IS FULLY ASSEMBLED AND FACTORY TESTED PRIOR TO SHIPMENT.
2. MAXIMUM WORKING PRESSURE IS 10 BAR (150 PSI).

Rev. 122718

THIS SPACE FOR ARCHITECT/ENGINEER APPROVAL

Due to continuing product improvement, the information contained in this document is subject to change without notice. All dimensions are $\pm 6\text{mm}$ (1/4"). Rev. 122718