

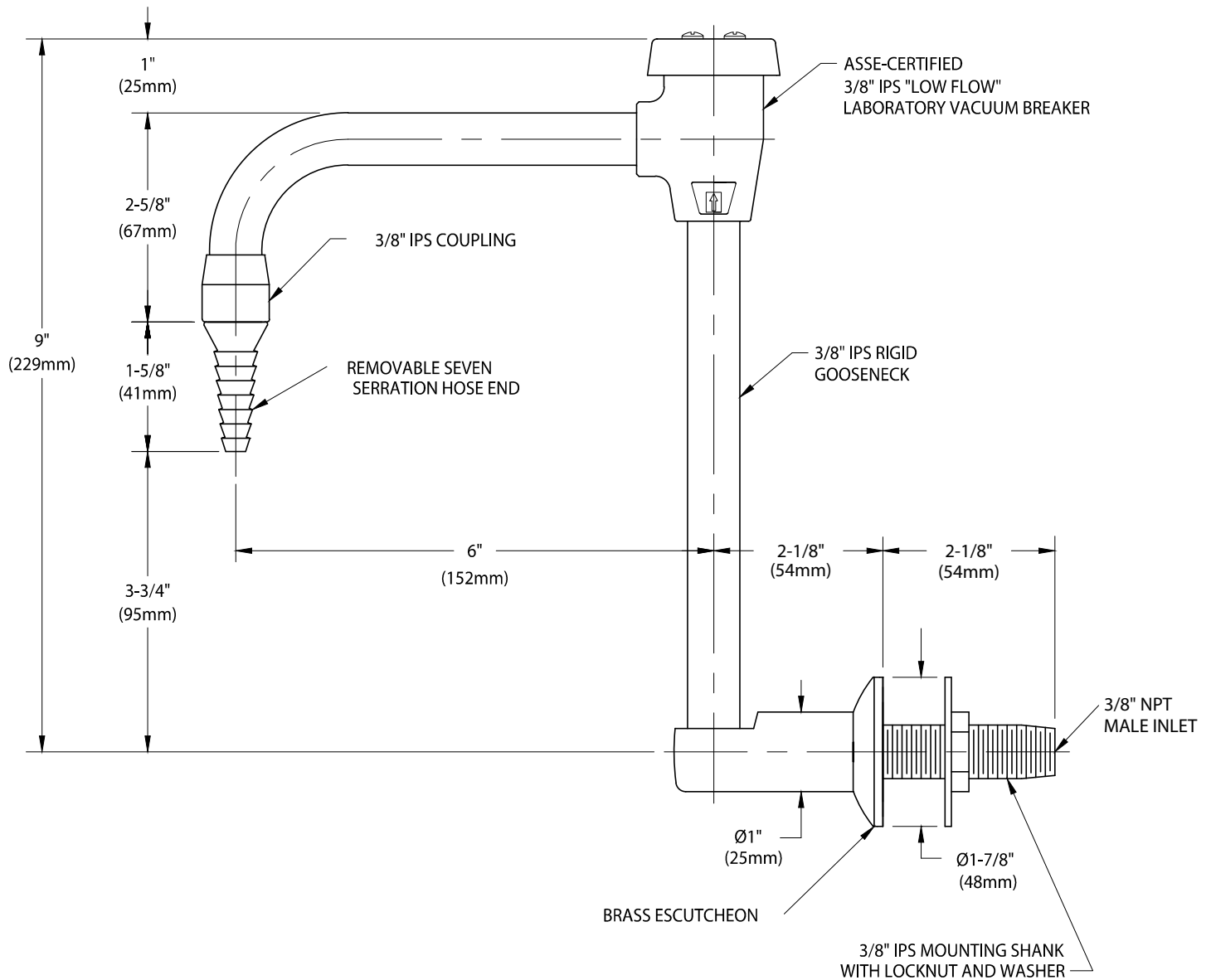


WaterSaver

ColorTech

CT071VB-WSA

OUTLET FITTING, PANEL MOUNTED, RIGID VACUUM BREAKER GOOSENECK



NOTES:

1. IF AERATOR IS REQUIRED IN PLACE OF HOSE END, ADD SUFFIX "55".
2. FITTING IS FURNISHED WITH A COLORTECH POWDER-COATED FINISH AS STANDARD. OTHER FINISHES ARE AVAILABLE UPON REQUEST.

MEASUREMENTS MAY VARY $\pm 1/4"$ (6mm).

WaterSaver Faucet Co. 312 666 5500 t
701 West Erie Street 312 666 5501 f
Chicago, IL 60654 wsflab.com

Drawing Number:

Revised: 062712-TEC