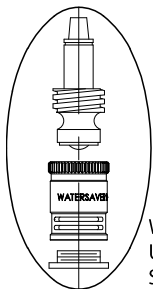
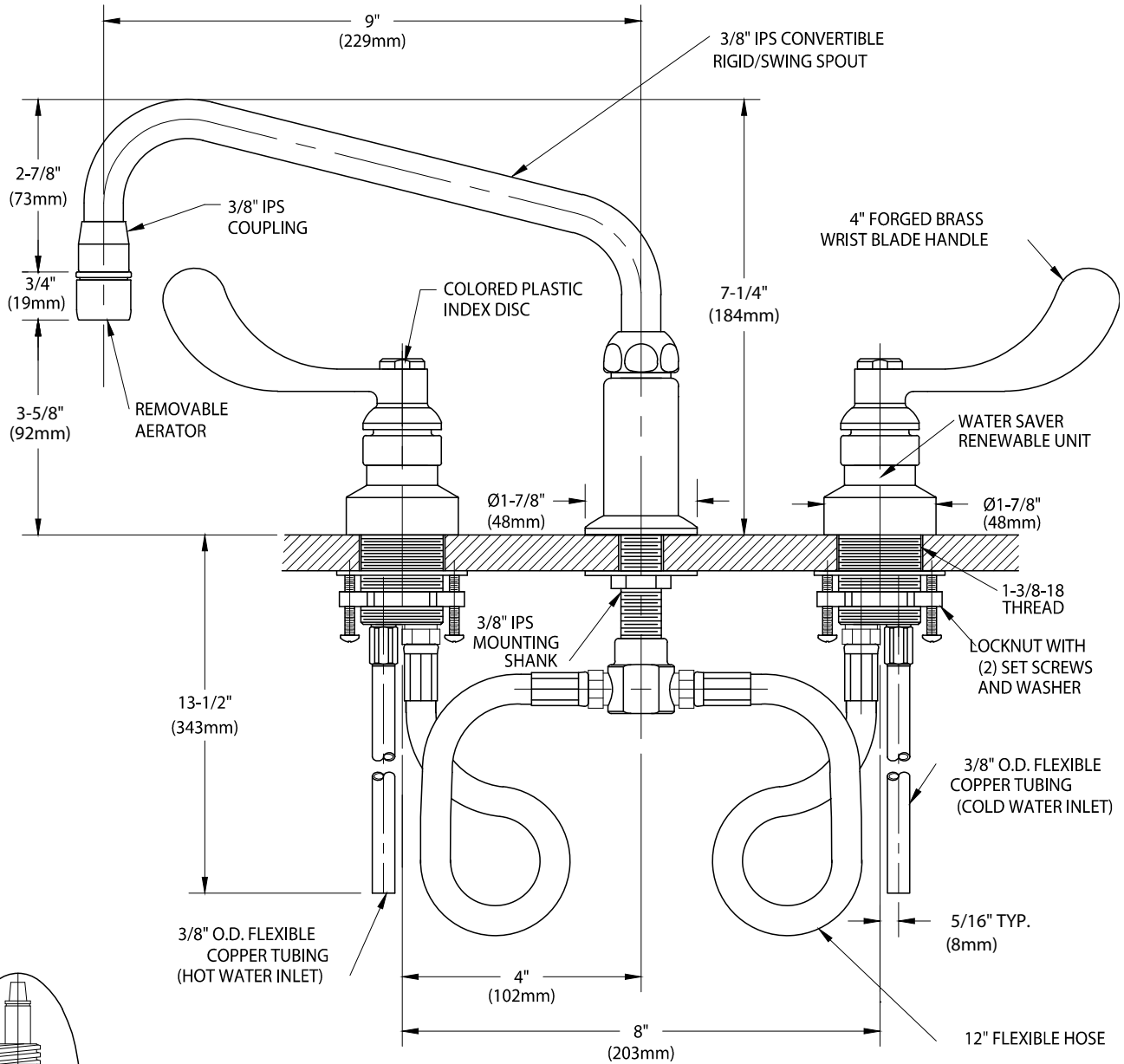




### CT2209BH Laboratory Mixing Faucet, Deck Mounted, 9" Rigid/Swing Spout, Aerator, Wrist Blade Handles



WATER SAVER RENEWABLE UNIT WITH REPLACEABLE STAINLESS STEEL SEAT



**NOTE:**

1. FIXTURE IS CERTIFIED BY CSA INTERNATIONAL TO COMPLY WITH ASME A112.18.1M AND CSA B125.1.
2. VALVES AND GOOSENECK FITTING ARE FULLY ASSEMBLED AND FACTORY TESTED PRIOR TO SHIPMENT.
3. FIXTURE HAS COLORTECH EPOXY POWDER COATED FINISH. SPECIFY COLOR (WHITE, GRAY OR TAN) WHEN ORDERING.

Measurements may vary ± 1/4".