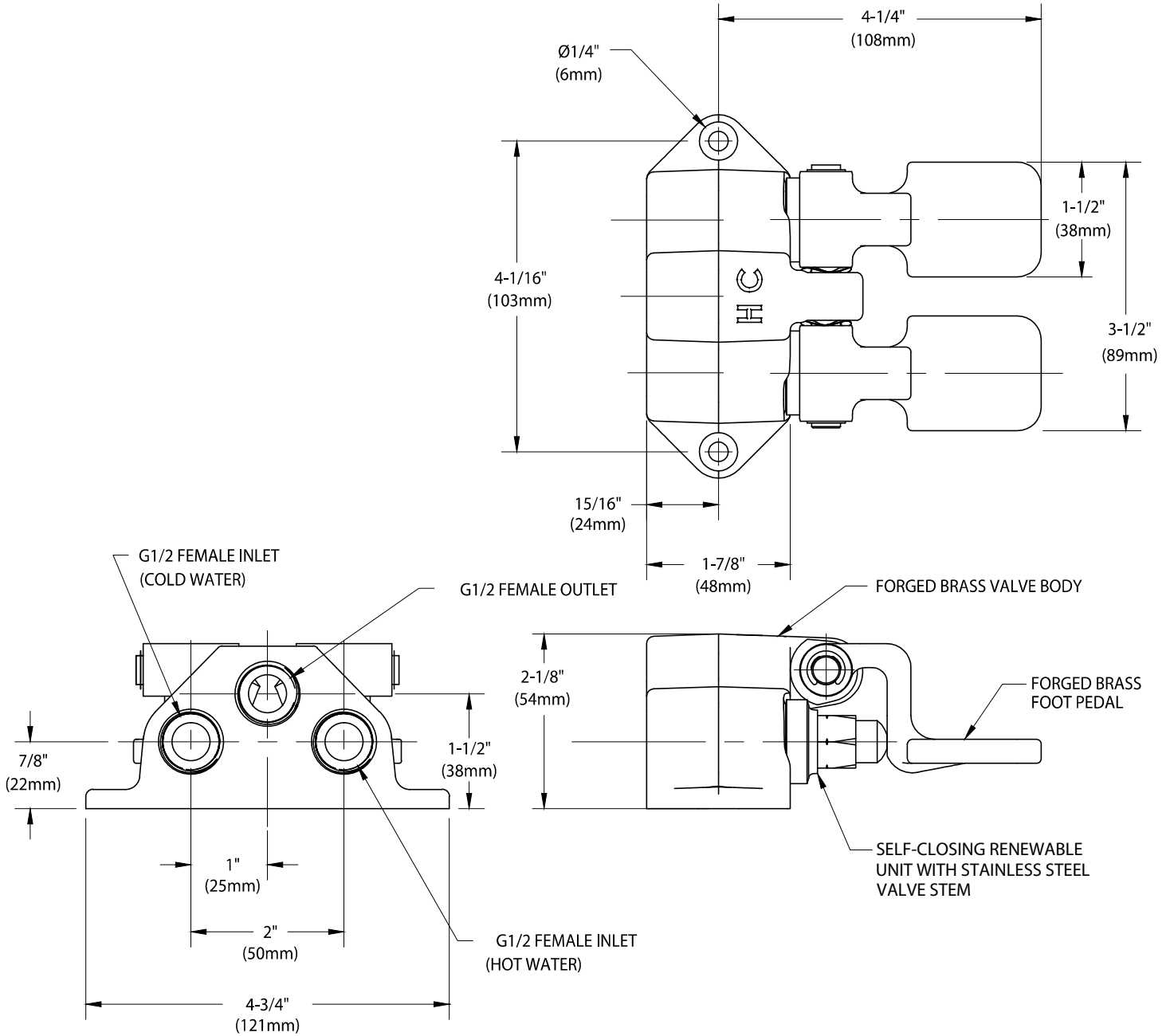




BT3001

FOOT-OPERATED MIXING VALVE, FLOOR MOUNTED



NOTE:

1. FIXTURE IS FULLY ASSEMBLED AND FACTORY TESTED PRIOR TO SHIPMENT.

MEASUREMENTS MAY VARY ±1/4" (6mm).

WaterSaver Faucet Co. 312 666 5500 t
 701 West Erie Street 312 666 5501 f
 Chicago, IL 60654 wsflab.com

Drawing Number:

Revised: 082014-KJS