

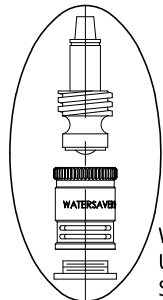
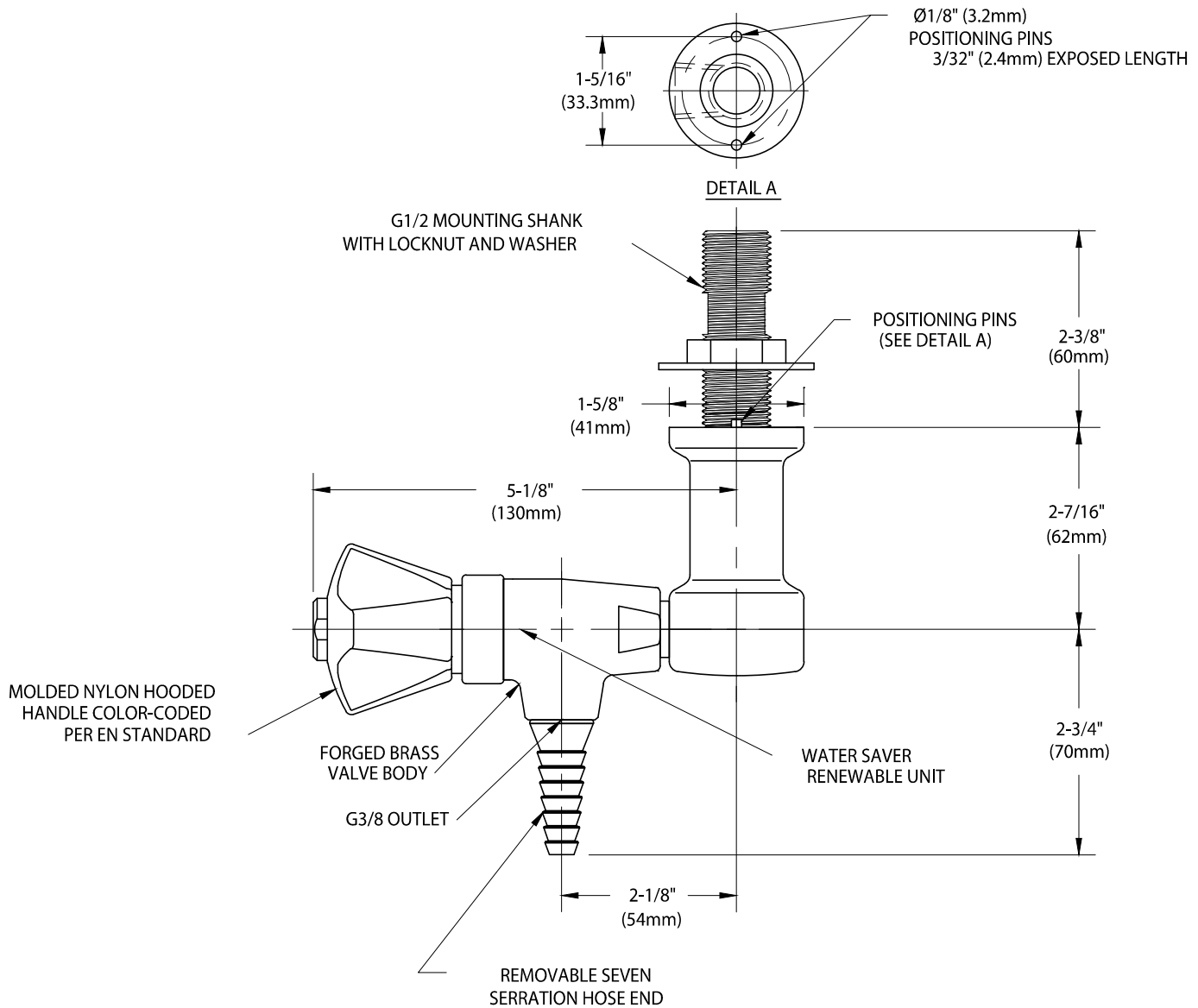


WaterSaver

ColorTech BT

BT3100-231WSA

LABORATORY WATER VALVE FITTING, OVERHEAD MOUNTED SINGLE



WATER SAVER RENEWABLE
UNIT WITH REPLACEABLE
STAINLESS STEEL SEAT

MEASUREMENTS MAY VARY $\pm 1/4$ " (6mm).

NOTES:

1. FITTING IS FULLY ASSEMBLED AND FACTORY TESTED PRIOR TO SHIPMENT.
2. IF CERAMIC DISC UNIT IS DESIRED, ORDER BTC2800-231WSA.
3. FITTING HAS COLORTECH EPOXY POWDER COATED FINISH. SPECIFY COLOR (WHITE, GRAY OR TAN) WHEN ORDERING.