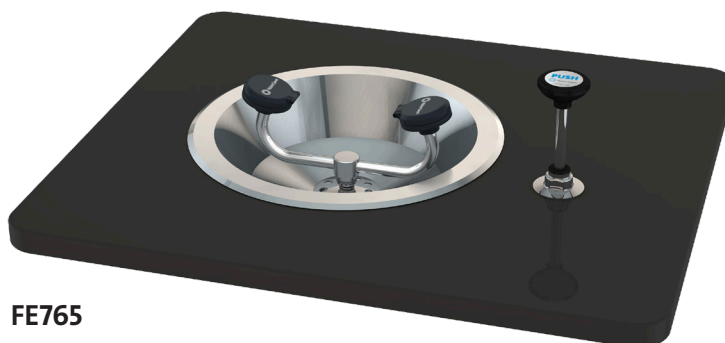
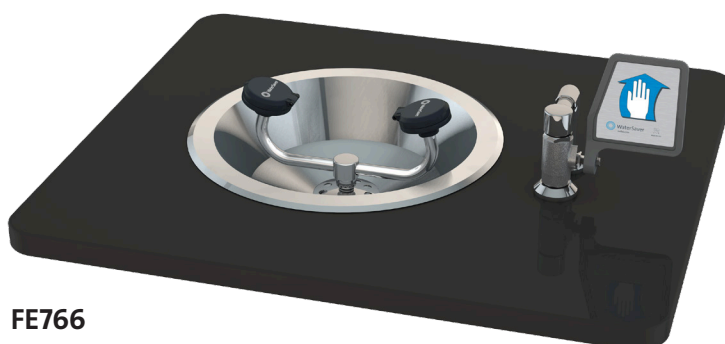


- ☐ **FE765** Eye/Face Wash, Recess Deck Mounted, Push-Down Valve
- ☐ **FE766** Eye/Face Wash, Recess Deck Mounted, Ball Valve with Flag Handle



**FE765**



**FE766**

**Application:** Eye/face wash for recessed mounting in countertop. Two large FS-Plus™ spray-type outlet heads deliver a flood of water for rinsing eyes and face.

**Spray Head Assembly:** Two FS-Plus™ spray heads. Each head has a “flip top” dust cover, internal flow control and filter to remove impurities from the water flow.

**Valve:** 1/2" IPS brass stay-open ball valve. FE765 has valve mounted below counter and activated by push-down knob. FE766 has valve mounted above counter and activated by flag handle.

**Bowl:** 13" diameter flanged stainless steel bowl for recessed mounting in countertop. Furnished with all hardware necessary for installation in counter.

**Supply:** 1/2" NPT male inlet.

**Waste:** 1-1/4" NPT female outlet.

**Sign:** ANSI-compliant identification sign.

**Quality Assurance:** Unit is completely assembled and water tested prior to shipment.

### Available Options

- ☐ **TM6020** Thermostatic mixing valve precisely blends hot and cold water to deliver tepid water as required by ANSI Z358.1-2014. Refer to “Thermostatic Mixing Valves” section for complete technical and product selection information.
- ☐ **DC** Stainless steel dust cover for each spray head.
- ☐ **T** Chrome plated brass tailpiece and trap with 1-1/2" IPS waste connection.
- ☐ **TP** 1-1/2" OD chrome plated brass tailpiece.

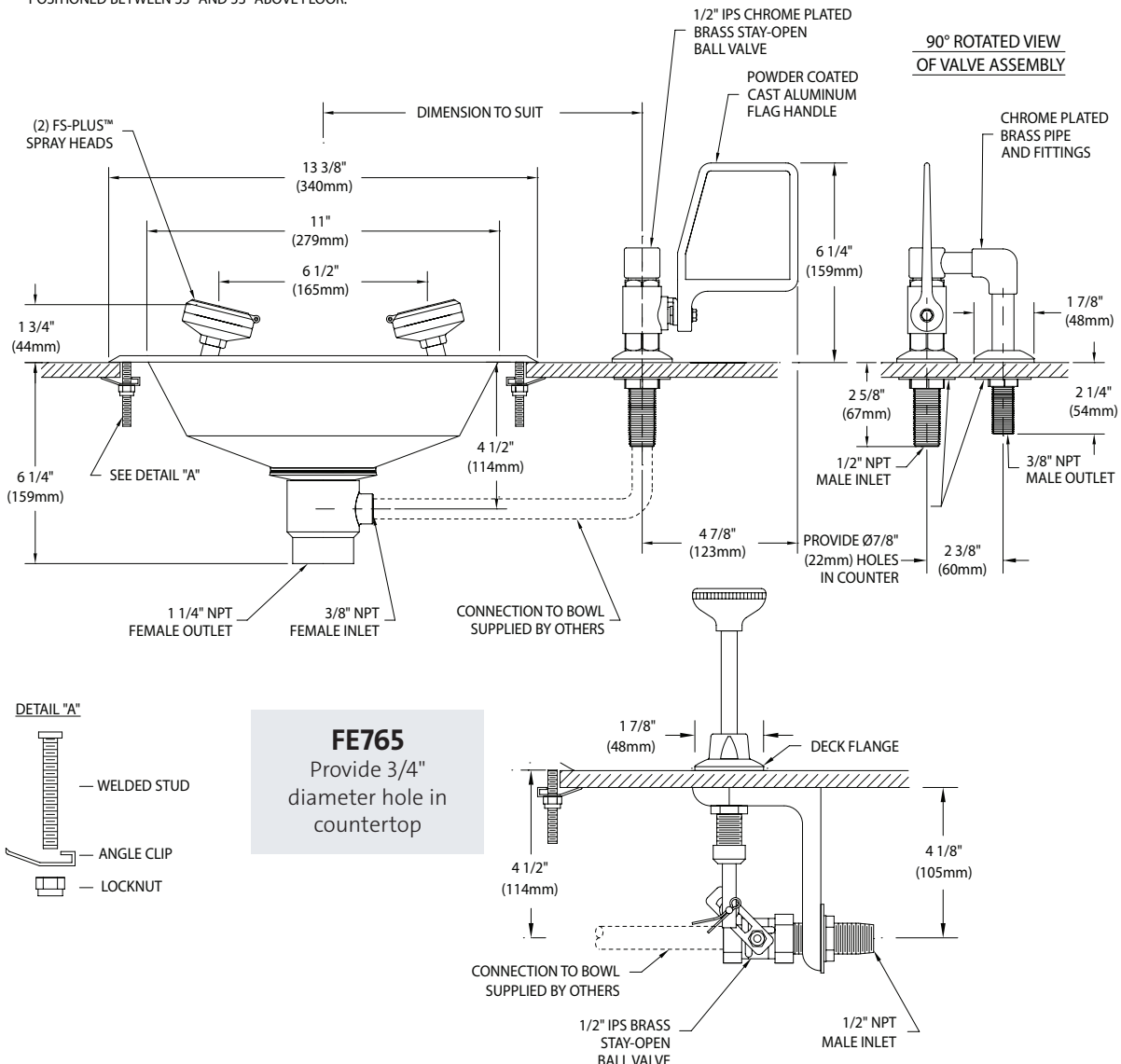
- ☐ **FE765** Eye/Face Wash, Recess Deck Mounted, Push-Down Valve
- ☐ **FE766** Eye/Face Wash, Recess Deck Mounted, Ball Valve with Flag Handle

### NOTES:

1. EACH FS-PLUS™ SPRAY HEAD HAS A "FLIP-TOP" DUST COVER, INTERNAL FLOW CONTROL AND FILTER TO REMOVE IMPURITIES FROM THE WATER FLOW.
2. UNIT FURNISHED COMPLETE WITH HARDWARE FOR MOUNTING ON COUNTERTOPS FROM 1/8" UP TO 1 1/2" THICK.
3. PROVIDE 12 1/2" ROUND CUT-OUT FOR BOWL.
4. UNIT SHOULD BE INSTALLED SUCH THAT WATER FLOW PATTERN IS POSITIONED BETWEEN 33" AND 53" ABOVE FLOOR.

### FE766

Provide (2) 7/8" diameter holes in countertop



THIS SPACE FOR ARCHITECT/ENGINEER APPROVAL

Due to continuing product improvement, the information contained in this document is subject to change without notice. All dimensions are  $\pm 1/4"$  (6mm). rev. 0422

Sign Included

