

GSC2650A Recessed Safety Center with Drain Pan, Exposed Shower Head

Application: Recessed safety center with barrier-free eye/face wash and shower safety station, matching fire extinguisher housing, ceiling mounted exposed shower head, and drain pan. Stainless steel cover provides attractive appearance and protects unit when not in use. When activated, cover serves as pan to collect waste water and return it into unit for drainage. The integrated fire extinguisher housing creates a cohesive aesthetic for all safety equipment requirements in one location.

Shower Valve: 1" IPS brass stay-open ball valve with stainless steel "panic bar". Pulling bar down activates shower; shower remains in operation until bar is returned to original closed position. Furnished with stainless steel access panel and 1" IPS unions for valve.

Shower Head: 10" diameter stainless steel.

Vover/Drain Pan: Furnished with 18 gauge stainless steel combination cover and drain pan. Grasping "panic bar" handle and opening cover pulls spray head assembly down from vertical to horizontal position, activating water flow. While unit is in operation, waste water is collected in drain pan and returned into cabinet for drainage. Unit remains in operation until cover is returned to closed position.

Eye/Face Wash Spray Head Assembly: Two FS-Plus™ spray heads mounted on supply arms. Each spray head has individually adjustable flow control and filter to remove impurities from water.

Eye/Face Wash Valve: 1/2" IPS brass rotating plug-type valve. Furnished with Teflon® coated O-ring seals and in-line strainer to protect valve from debris and foreign matter.

Mounting: Unit is comprised of (2) modular 16 gauge stainless steel cabinets with flanged rims for recessed mounting in wall.

Supply: 1" NPT female inlet.

Waste: 2" NPT female outlet.

Sign: Furnished with ANSI-compliant identification sign.

U.S. patent 5,768,721

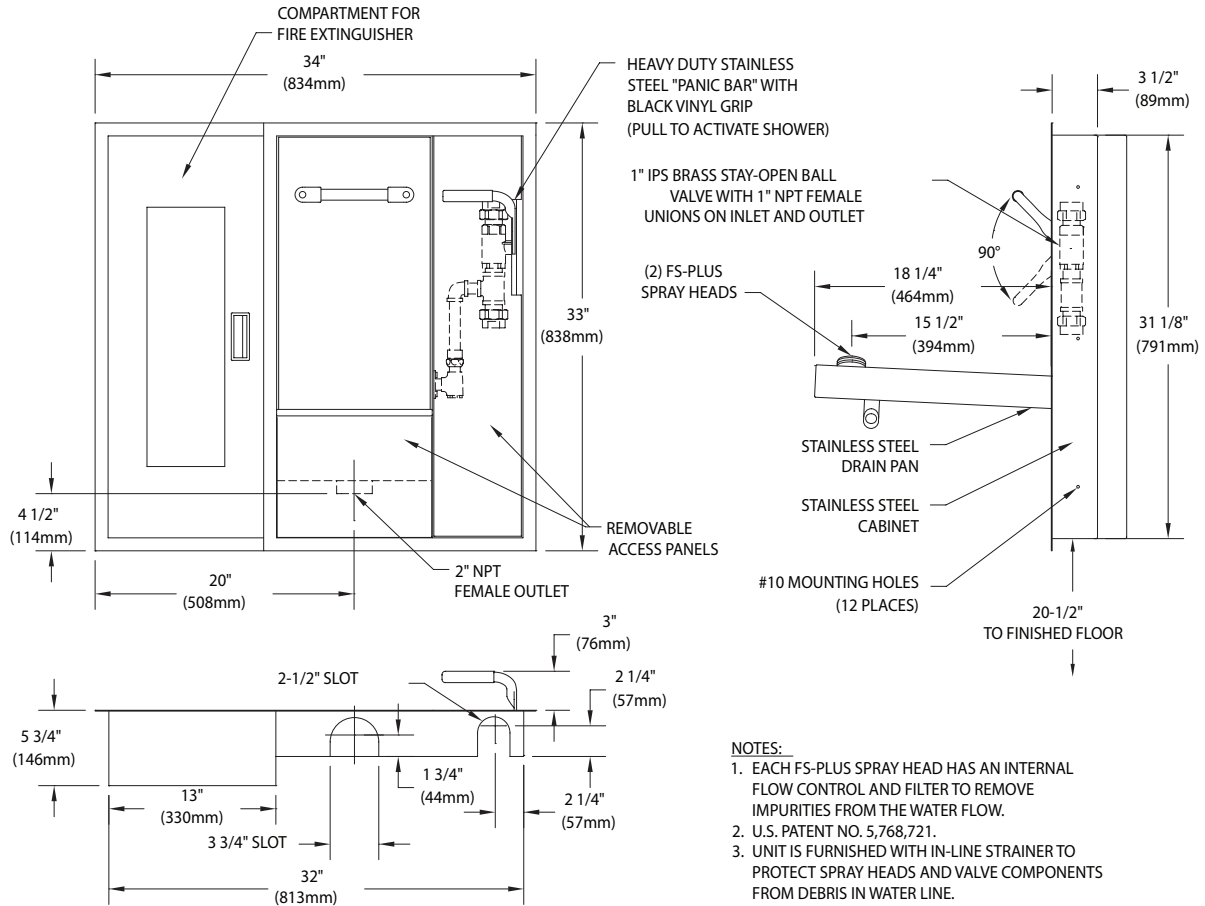
Available Options

- FC20** Regulates shower flow rate to 20 GPM.
- AP250-065 Modesty Curtain** Modesty curtain for wall mounting.
- AP280-235 Electric Light and Alarm Horn** Flashing light/alarm horn unit is recess mounted in finished wall. Light is illuminated and horn sounds when shower is activated. Includes additional leads for remote monitoring.
- TMV** AP3800 thermostatic mixing valve precisely blends hot and cold water to deliver tepid water as required by ANSI Z358.1-2014.

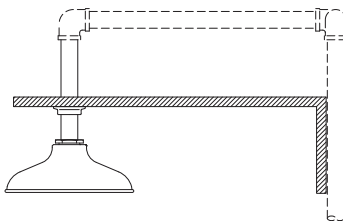


Note: Shown with optional AP280-235 electric light and alarm horn unit. Fire extinguisher sold separately.

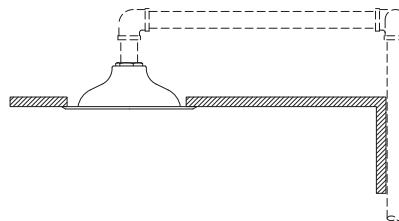
□ GSC2650A Recessed Safety Center with Drain Pan, Exposed Shower Head



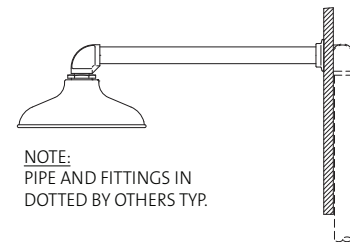
Shower Configurations



□ **GSC2650A**
Stainless Steel Shower Head,
Semi-Concealed Ceiling Mounted



□ **GSC2660A**
Stainless Steel Shower Head,
Recessed Ceiling Mounted



□ **GSC2670A**
Stainless Steel Shower Head,
Wall Mounted

NOTE:
PIPE AND FITTINGS IN
DOTTED BY OTHERS TYP.

Sign Included

THIS SPACE FOR ARCHITECT/ENGINEER APPROVAL



Due to continuing product improvement, the information contained in this document is subject to change without notice. All dimensions are ± 1/4" (6mm). rev. 0215

