

### □ SS950PCC Safety Station with Eye/Face Wash, Polished Chrome Construction

**Application:** Combination WideArea™ eye/face wash and shower safety station. Unit is constructed of polished chrome plated brass pipe, fittings and components for attractive appearance and superior durability. Two large FS-Plus™ spray-type outlet heads deliver a flood of water for rinsing eyes and face.

**Shower Head:** 10" diameter stainless steel.

**Shower Valve:** 1" IPS chrome plated brass stay-open ball valve. Valve is US-made with chrome plated brass ball and Teflon® seals. Furnished with stainless steel actuating arm and 29" stainless steel pull rod.

**Spray Head Assembly:** Two FS-Plus™ spray heads. Each head has a "flip top" dust cover, internal flow control and filter to remove impurities from the water flow.

**Eye/Face Wash Bowl:** 11-1/2" diameter stainless steel.

**Eye/Face Wash Valve:** 1/2" IPS chrome plated brass stay-open ball valve. Valve is US-made with chrome plated brass ball and Teflon® seals.

**Pipe and Fittings:** Polished chrome plated brass.

**Supply:** 1-1/4" NPT female top or side inlet.

**Waste:** 1-1/4" NPT female outlet. Outlet can be positioned at either 9-1/4" or 19-5/8" above finished floor by reversing lower pipe nipples.

**Sign:** Furnished with ANSI-compliant identification sign.

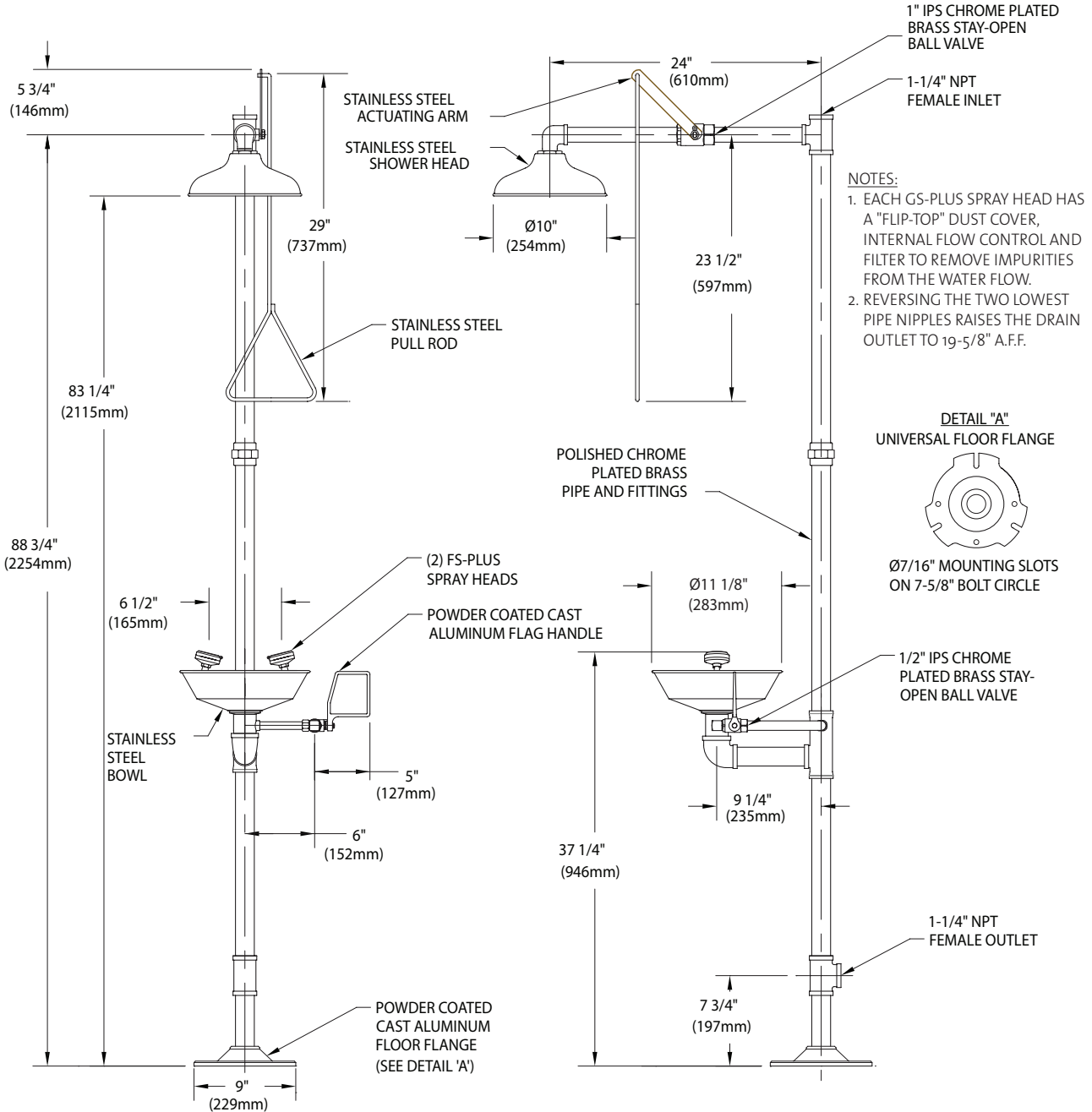
**Quality Assurance:** Valve and spray head assemblies are factory assembled and water tested prior to shipment.

### Available Options

- **FC20** Regulates shower flow rate to 20 GPM.
- **SSH** Stainless steel shower head.
- **AP275-100 ELECTRIC LIGHT AND ALARM HORN**  
Light and alarm horn summon assistance when eye/face wash or shower is activated.
- **AP250-015 MODESTY CURTAIN**  
Modesty curtain for mounting on safety station.
- **TMV** AP3800 thermostatic mixing valve precisely blends hot and cold water to deliver warm (tepid) water as required by ANSI Z358.1-2014.



**SS950PCC** Safety Station with Eye/Face Wash, Polished Chrome Construction



THIS SPACE FOR ARCHITECT/ENGINEER APPROVAL

Due to continuing product improvement, the information contained in this document is subject to change without notice. All dimensions are ± 1/4" (6mm). rev. 0615

Sign Included

