

BT2870-231WSA Fine Control Needle Valve, Bench Mounted



Application: Precise flow regulation of laboratory gases. Ideal for special gases such as nitrogen, oxygen, helium and hydrogen. Valve is specially cleaned, lubricated and packaged for use with high purity gases.

Mounting: Turret base for bench mounting with locator pins.

Valve Body: Straight pattern forged brass

Headwork: Replaceable self-centering stainless steel needle and replaceable stainless steel seat. Needle is finely tapered for precise metering of flow. *Valve is capable of delivering one bubble of nitrogen gas at a time.*

Handle: Molded nylon hooded style handle with index disc. Handle and index are color coded and marked per EN 13792.

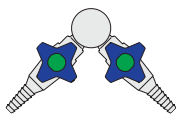
Inlet: Furnished with G1/2 mounting shank, locknut and washer. G1/2 male inlet.

Outlet: G3/8 female outlet. Furnished with removable straight or angle serrated hose end, quick connect fitting or compression fitting, as ordered (see below).

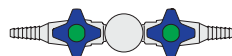
Quality Assurance: Fitting is fully assembled and factory tested prior to shipment. 25 bar (375 PSI) nitrogen test pressure and 17 bar (250 PSI) maximum working pressure.



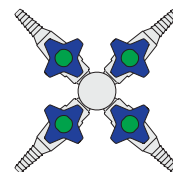
Single Valve
BT2870-231WSA



Two Valves at 90°
BT2870-232AWSA



Two Valves at 180°
BT2870-232SWSA



Four Valves
BT2870-234WSA

Ordering Information

Outlet Fitting Options	Valve Configurations			
	Single Valve	Two Valves at 90°	Two Valves at 180°	Four Valves
Serrated hose end	<input type="checkbox"/> BT2870-231WSA	<input type="checkbox"/> BT2870-232AWSA	<input type="checkbox"/> BT2870-232SWSA	<input type="checkbox"/> BT2870-234WSA
Angle serrated hose end	<input type="checkbox"/> BT2872-231WSA	<input type="checkbox"/> BT2872-232AWSA	<input type="checkbox"/> BT2872-232SWSA	<input type="checkbox"/> BT2872-234WSA
G3/8 quick connect fitting	<input type="checkbox"/> BT2873-231WSA	<input type="checkbox"/> BT2873-232AWSA	<input type="checkbox"/> BT2873-232SWSA	<input type="checkbox"/> BT2873-234WSA
10mm OD compression fitting	<input type="checkbox"/> BT2874-231WSA	<input type="checkbox"/> BT2874-232AWSA	<input type="checkbox"/> BT2874-232SWSA	<input type="checkbox"/> BT2874-234WSA

Product Finish

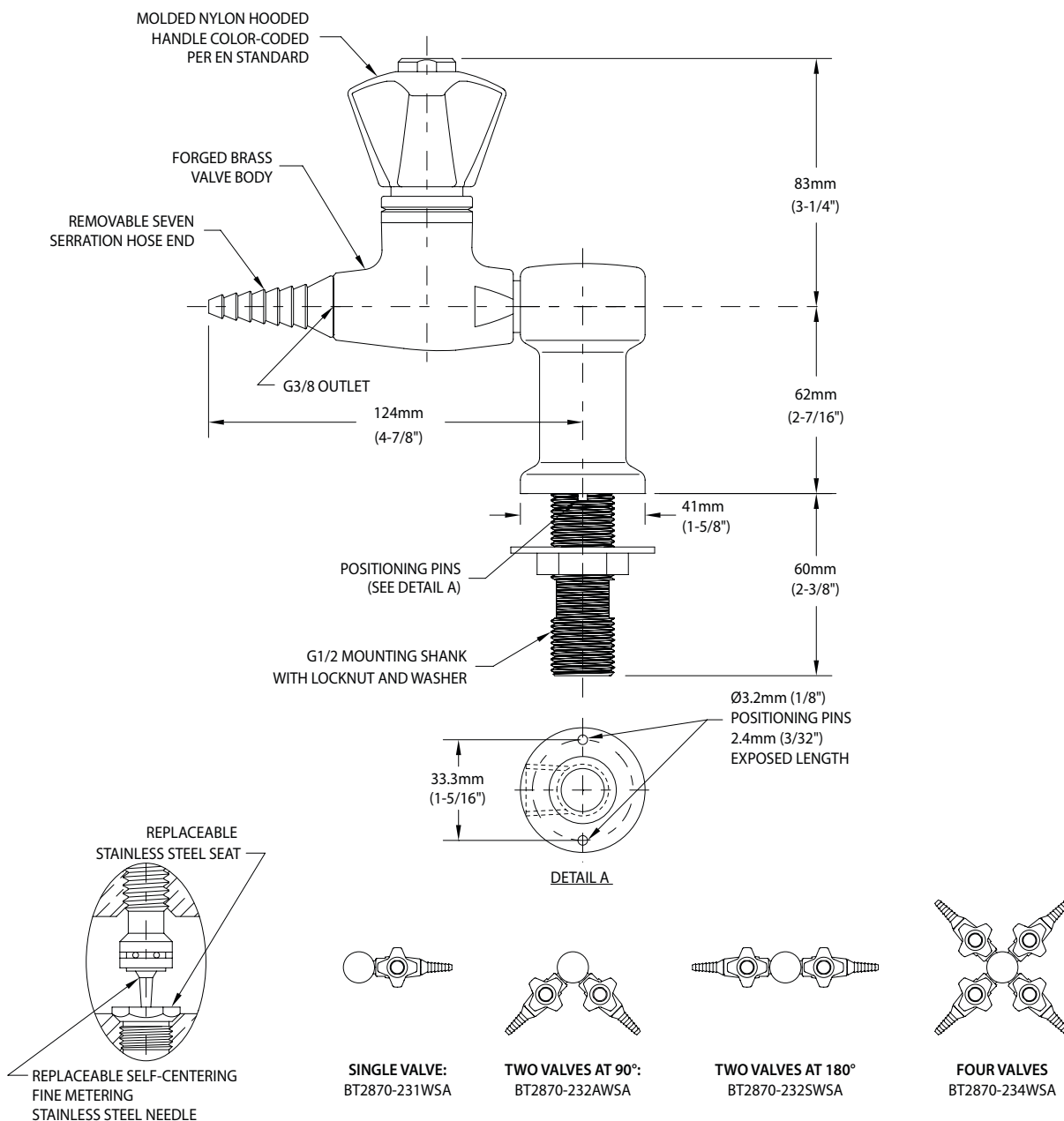
<input type="checkbox"/> WHT	Gloss white powder coated finish	<input type="checkbox"/> PCL	Polished chrome plated finish with clear epoxy coating
<input type="checkbox"/> GRY	Gloss light gray powder coated finish	<input type="checkbox"/> SCC	Satin chrome plated finish with clear epoxy coating
<input type="checkbox"/> GRD	Gloss dark gray powder coated finish	<input type="checkbox"/> SNC	Satin nickel plated finish with clear epoxy coating
<input type="checkbox"/> STM	Starburst metallic powder coated finish		

Note: Refer to "Product Finishes" catalog for complete information on finishes.

Media

☐ _____

BT2870-231WSA Fine Control Needle Valve, Bench Mounted



NOTES:

1. FITTING IS CLEANED, DEGREASED AND PACKED FOR HIGH PURITY GAS SERVICE.
2. FITTING IS FACTORY ASSEMBLED AND TESTED AT 25 BAR (375 PSI). MAXIMUM WORKING PRESSURE IS 17 BAR (250 PSI).

Rev. 052318

THIS SPACE FOR ARCHITECT/ENGINEER APPROVAL

Due to continuing product improvement, the information contained in this document is subject to change without notice. All dimensions are $\pm 6\text{mm}$ (1/4"). Rev. 052318