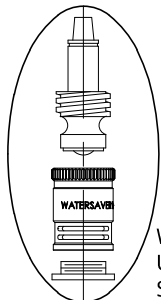
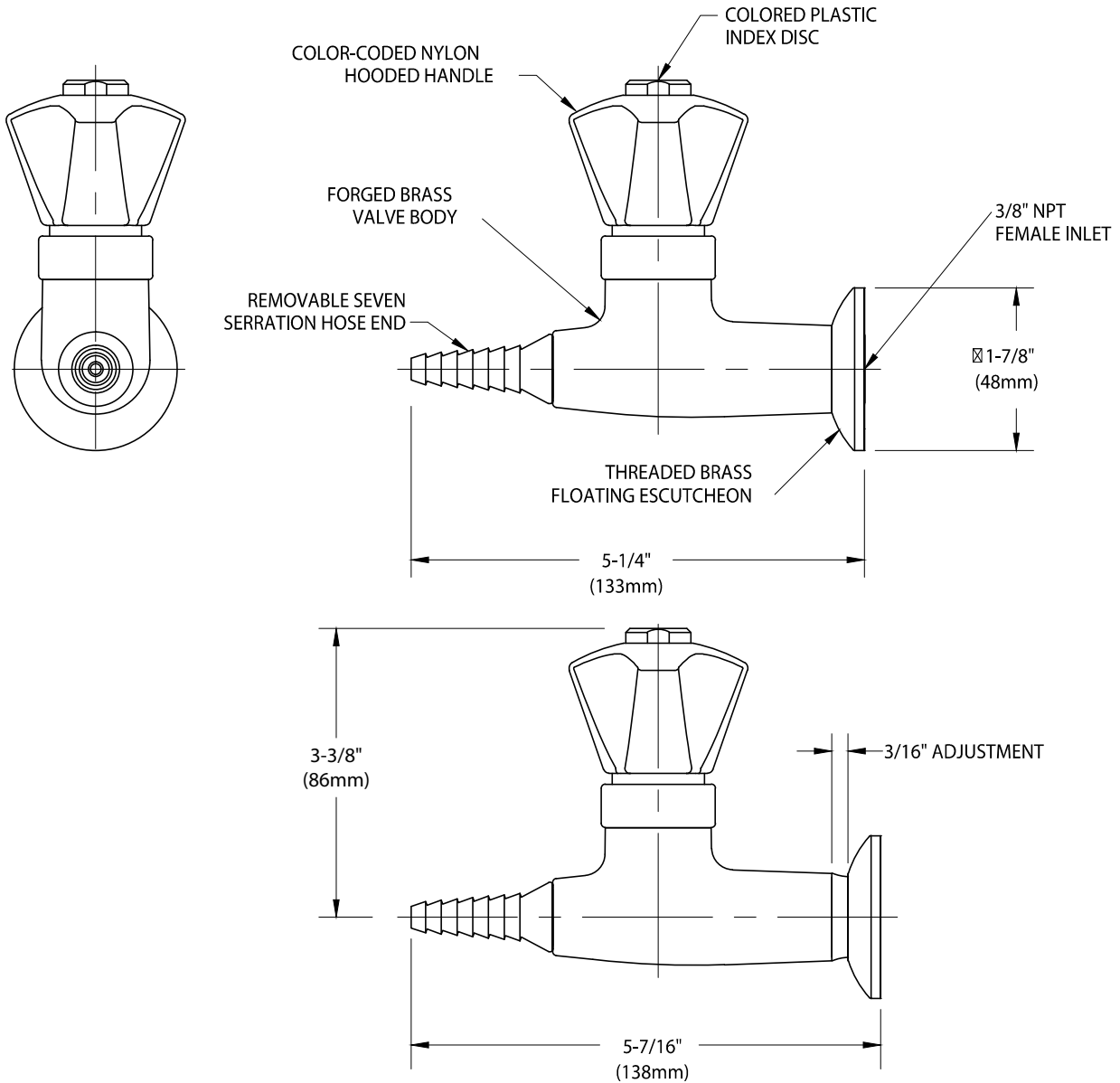




CT4800FT-325

LABORATORY WATER VALVE ASSEMBLY, WALL MOUNTED, FLOATING ESCUTCHEON



WATER SAVER RENEWABLE
UNIT WITH REPLACEABLE
STAINLESS STEEL SEAT

MEASUREMENTS MAY VARY $\pm 1/4$ " (6mm).

WaterSaver Faucet Co. 312 666 5500 t
701 West Erie Street 312 666 5501 f
Chicago, IL 60654 wsflab.com

Drawing Number:

Revised: 011713-TEC



- NOTES:**
1. VALVE IS CERTIFIED BY CSA INTERNATIONAL TO COMPLY WITH ASME A112.18.1M AND CSA B125.1.
 2. FIXTURE IS FULLY ASSEMBLED AND FACTORY TESTED PRIOR TO SHIPMENT.
 3. FIXTURE HAS FEMALE INLET FOR CONNECTION TO SUPPLY. FLOATING ESCUTCHEON IS THREADED TO WALL TO CONCEAL ANY GAP BETWEEN VALVE AND WALL.
 4. FIXTURE HAS COLORTECH EPOXY POWDER COATED FINISH. SPECIFY COLOR (WHITE, GRAY OR TAN) WHEN ORDERING.