

**BT2860I-141WSA** Double Push/Turn Gas Valve, Wall/Panel Mounted



**Application:** Flow control of burning or combustible gases such as natural gas, propane and bottled gas. Valve is certified for natural gas service by CSA International.

**Mounting:** Wye fitting for wall/panel mounting with locator pins.

**Valve Bodies:** Straight pattern forged brass.

**Headworks:** Self-contained push/turn cartridges with rotating ceramic discs. Valves lock in closed position.

**Handles:** Forged brass handles with index discs and pop-up indicator buttons. Handles lock in closed position. Handles must be pushed down to unlock and open valves. Red pop-up buttons indicate if valves are open or closed. Handles and index discs are color coded and marked per EN 13792.

**Inlet:** Furnished with G1/2 mounting shank, locknut and washer. G1/2 male inlet.

**Outlets:** G3/8 female outlets. Furnished with removable straight serrated hose end or quick connect fitting with hose end, as ordered (see below).

**Quality Assurance:** Fitting is fully assembled and factory tested prior to shipment. 10 bar (150 PSI) test pressure and 7 bar (100 PSI) maximum working pressure.

**Ordering Information**

**Outlet Fitting Options**

Serrated hose end	<input type="checkbox"/> BT2860I-141WSA
Quick connect fitting with hose end	<input type="checkbox"/> BT2863HI-141WSA

**Note:** If red pop-up indicator buttons are not required, delete suffix "I". Fitting will be furnished with molded nylon handles.

**Product Finish**

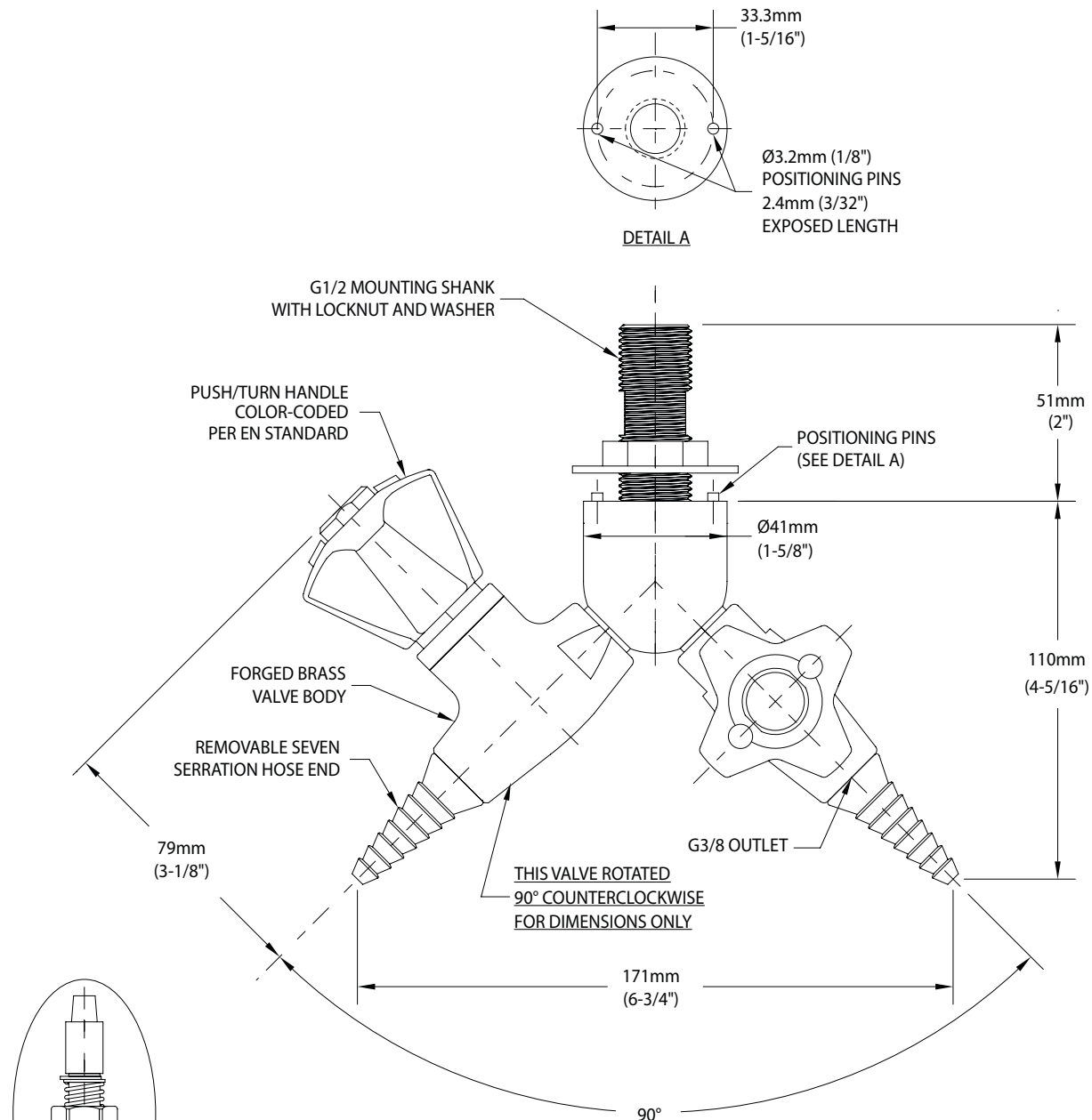
<input type="checkbox"/> WHT	Gloss white powder coated finish	<input type="checkbox"/> PCL	Polished chrome plated finish with clear epoxy coating
<input type="checkbox"/> GRY	Gloss light gray powder coated finish	<input type="checkbox"/> SCC	Satin chrome plated finish with clear epoxy coating
<input type="checkbox"/> GRD	Gloss dark gray powder coated finish	<input type="checkbox"/> SNC	Satin nickel plated finish with clear epoxy coating
<input type="checkbox"/> STM	Starburst metallic powder coated finish		

**Note:** Refer to "Product Finishes" catalog for complete information on finishes.

**Media**

\_\_\_\_\_

BT2860I-141WSA Double Push/Turn Gas Valve, Wall/Panel Mounted



NOTES:

1. FITTING IS FACTORY ASSEMBLED AND TESTED AT 10 BAR (150 PSI). MAXIMUM WORKING PRESSURE IS 7 BAR (100 PSI).

Rev. 051418

REPLACEABLE PUSH/TURN  
 CERAMIC DISC CARTRIDGE

THIS SPACE FOR ARCHITECT/ENGINEER APPROVAL

Due to continuing product improvement, the information contained in this document is subject to change without notice. All dimensions are ± 6mm (1/4"). Rev. 071618