

BT2870-141WSA Double Fine Control Needle Valve, Wall/Panel Mounted



Application: Precise flow regulation of laboratory gases. Ideal for special gases such as nitrogen, oxygen, helium and hydrogen. Valve is specially cleaned, lubricated and packaged for use with high purity gases.

Mounting: Wye fitting for wall/panel mounting with locator pins.

Valve Bodies: Straight pattern forged brass.

Headworks: Replaceable self-centering stainless steel needle and replaceable stainless steel seat. Needle is finely tapered for precise metering of flow. *Valve is capable of delivering one bubble of nitrogen gas at a time.*

Handles: Molded nylon hooded style handles with index discs. Handles and indexes are color coded and marked per EN 13792.

Inlet: Furnished with G1/2 mounting shank, locknut and washer. G1/2 male inlet.

Outlets: G3/8 female outlets. Furnished with removable straight or angle serrated hose end, quick connect fitting or compression fitting, as ordered (see below).

Quality Assurance: Fitting is fully assembled and factory tested prior to shipment. 25 bar (375 PSI) nitrogen test pressure and 17 bar (250 PSI) maximum working pressure.

Ordering Information

Outlet Fitting Options

Serrated hose end	<input type="checkbox"/> BT2870-141WSA
Angle serrated hose end	<input type="checkbox"/> BT2872-141WSA
G3/8 quick connect fitting	<input type="checkbox"/> BT2873-141WSA
10mm OD compression fitting	<input type="checkbox"/> BT2874-141WSA

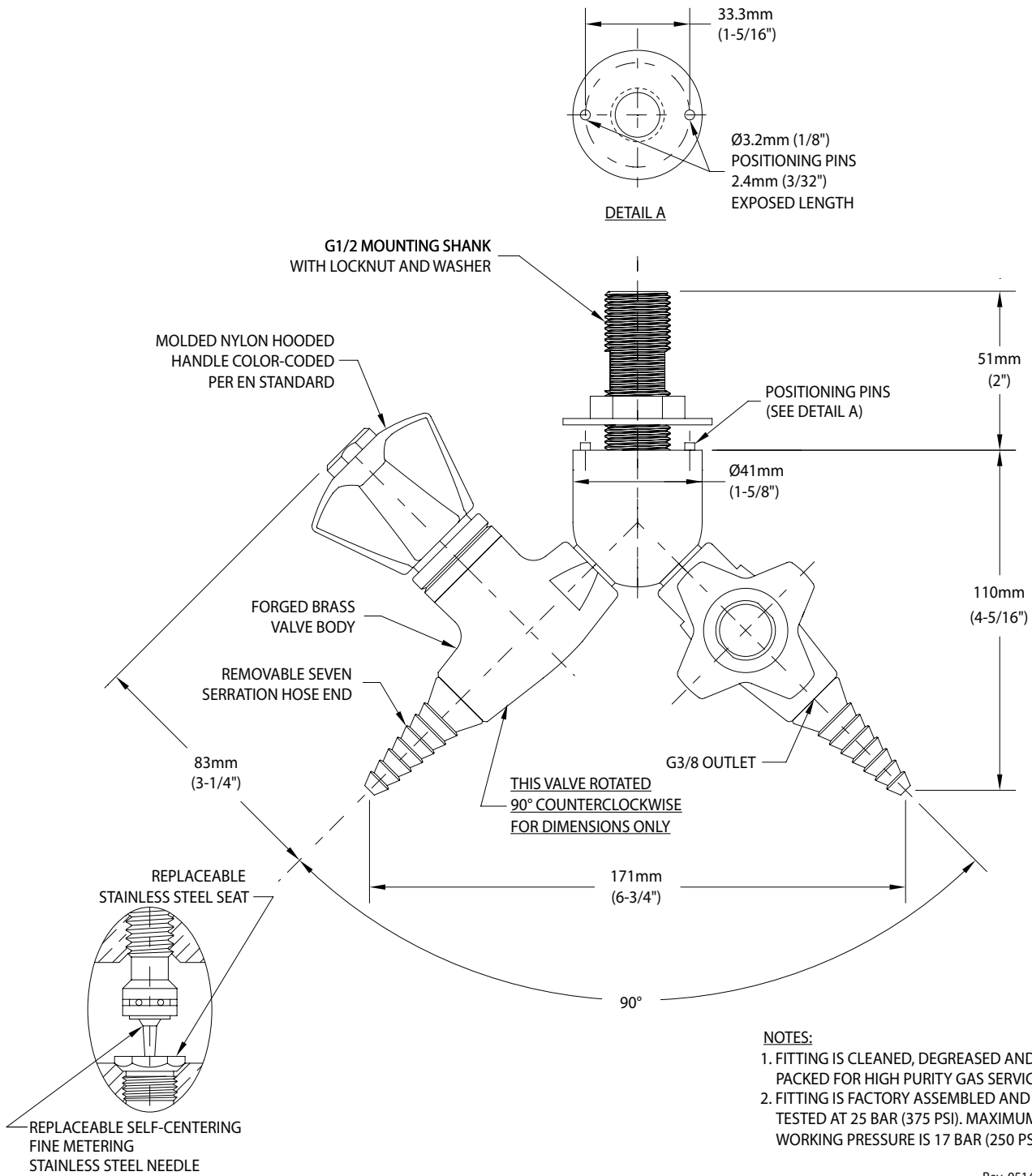
Product Finish

<input type="checkbox"/> WHT	Gloss white powder coated finish	<input type="checkbox"/> PCL	Polished chrome plated finish with clear epoxy coating
<input type="checkbox"/> GRY	Gloss light gray powder coated finish	<input type="checkbox"/> SCC	Satin chrome plated finish with clear epoxy coating
<input type="checkbox"/> GRD	Gloss dark gray powder coated finish	<input type="checkbox"/> SNC	Satin nickel plated finish with clear epoxy coating
<input type="checkbox"/> STM	Starburst metallic powder coated finish		

Note: Refer to "Product Finishes" catalog for complete information on finishes.

Media

BT2870-141WSA Double Fine Control Needle Valve, Wall/Panel Mounted



Rev. 051418

THIS SPACE FOR ARCHITECT/ENGINEER APPROVAL

Due to continuing product improvement, the information contained in this document is subject to change without notice. All dimensions are ± 6mm (1/4"). Rev. 060718