

BT3160I-231WSA Push/Turn Gas Valve, Overhead Mounted



Application: Flow control of burning or combustible gases such as natural gas, propane and bottled gas. Valve is certified for natural gas service by CSA International.

Mounting: Turret base for overhead mounting with locator pins.

Valve Body: Angle pattern forged brass.

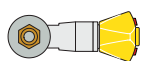
Headwork: Self-contained push/turn cartridge with rotating ceramic discs. Valve locks in closed position.

Handle: Forged brass handle with index disc and pop-up indicator buttons. Handle locks in closed position. Handle must be pushed down to unlock and open valve. Red pop-up buttons indicate if valve is open or closed. Handle and index disc are color coded and marked per EN 13792.

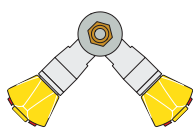
Inlet: Furnished with G1/2 mounting shank, locknut and washer. G1/2 male inlet.

Outlet: G3/8 female outlet. Furnished with removable straight serrated hose end or quick connect fitting with hose end, as ordered (see below).

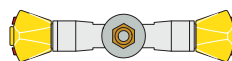
Quality Assurance: Fitting is fully assembled and factory tested prior to shipment. 10 bar (150 PSI) test pressure and 7 bar (100 PSI) maximum working pressure.



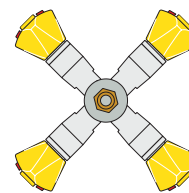
Single Valve
BT3160I-231WSA



Two Valves at 90°
BT3160I-232AWSA



Two Valves at 180°
BT3160I-232SWSA



Four Valves
BT3160I-234WSA

Ordering Information

Valve Configurations

Outlet Fitting Options

Serrated hose end

BT3160I-231WSA BT3160I-232AWSA BT3160I-232SWSA BT3160I-234WSA

Quick connect fitting with hose end

BT3163HI-231WSA BT3163HI-232AWSA BT3163HI-232SWSA BT3163HI-234WSA

Note: If red pop-up indicator buttons are not required, delete suffix "I". Fitting will be furnished with molded nylon handle.

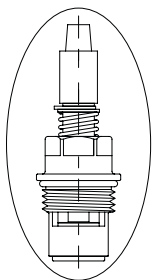
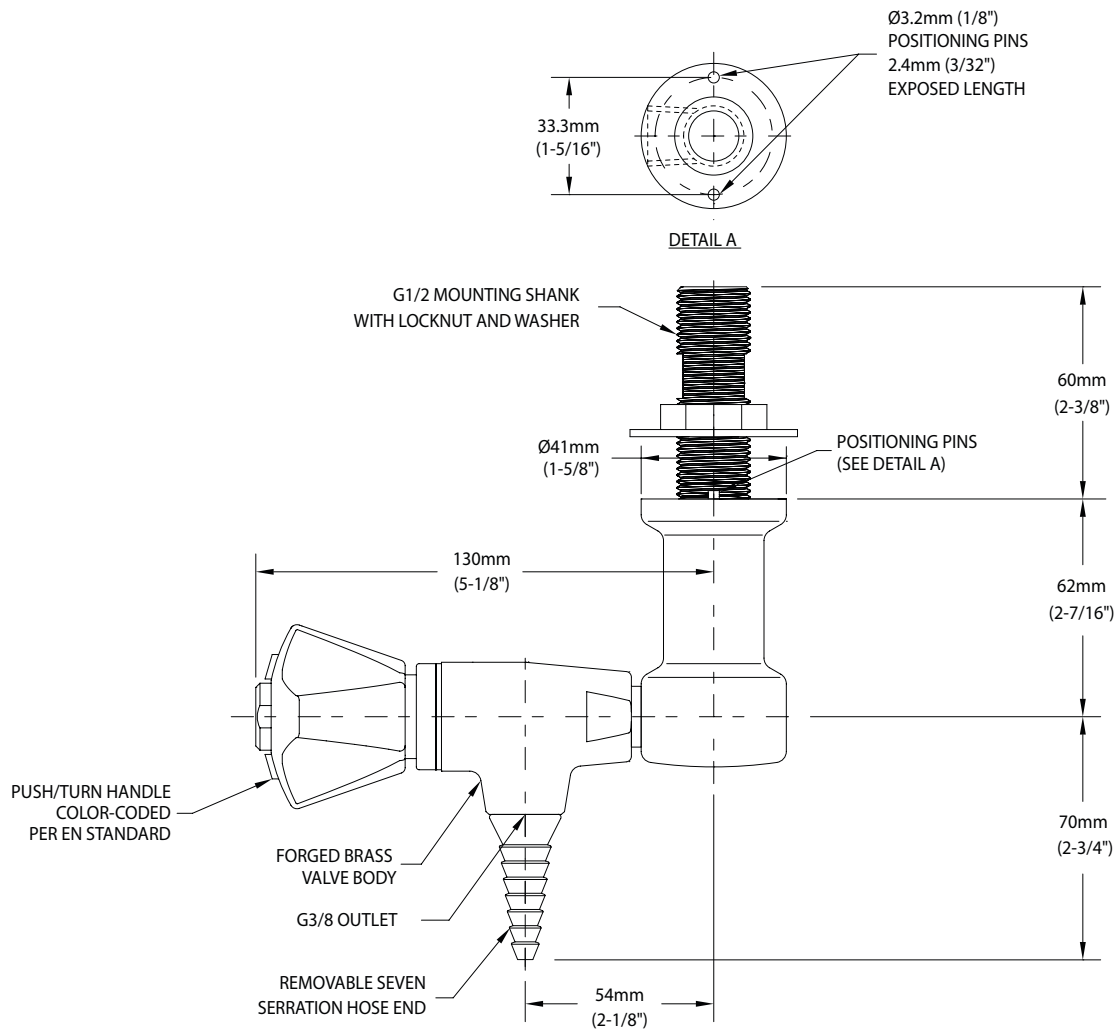
Product Finish

- | | | | |
|------------------------------|---|------------------------------|--|
| <input type="checkbox"/> WHT | Gloss white powder coated finish | <input type="checkbox"/> PCL | Polished chrome plated finish with clear epoxy coating |
| <input type="checkbox"/> GRY | Gloss light gray powder coated finish | <input type="checkbox"/> SCC | Satin chrome plated finish with clear epoxy coating |
| <input type="checkbox"/> GRD | Gloss dark gray powder coated finish | <input type="checkbox"/> SNC | Satin nickel plated finish with clear epoxy coating |
| <input type="checkbox"/> STM | Starburst metallic powder coated finish | | |

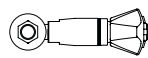
Note: Refer to "Product Finishes" catalog for complete information on finishes.

Media

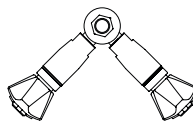
BT3160I-231WSA Push/Turn Gas Valve, Overhead Mounted



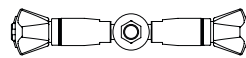
REPLACEABLE PUSH/TURN CERAMIC DISC CARTRIDGE



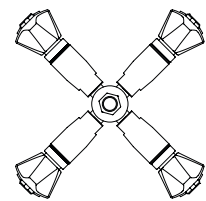
SINGLE VALVE:
BT3160I-231WSA



TWO VALVES AT 90°:
BT3160I-232AWSA



TWO VALVES AT 180°:
BT3160I-232SWSA



FOUR VALVES:
BT3160I-234WSA

NOTES:

1. FITTING IS FACTORY ASSEMBLED AND TESTED AT 10 BAR (150 PSI). MAXIMUM WORKING PRESSURE IS 7 BAR (100 PSI).

Rev. 050318

THIS SPACE FOR ARCHITECT/ENGINEER APPROVAL

Due to continuing product improvement, the information contained in this document is subject to change without notice. All dimensions are $\pm 6\text{mm}$ (1/4"). Rev. 052218