

BT4604 Single Handle Mixer Tap, Bench Mounted



Application: Laboratory water mixer tap for hot and cold water.

Mounting: Bench or countertop mounted with locator pins.

Body: Brass bar stock.

Headwork: WaterSaver self-contained ceramic disc mixer cartridge.

Handle: Cast zinc handle finished to match mixer.

Gooseneck: 150mm (6") convertible rigid/swing gooseneck.

Inlets: (2) 10mm OD flexible copper tubes. Furnished complete with 30.5mm (1-3/16") dia. mounting shank, locknut and washer.

Outlet: G3/8 female outlet with removable anti-splash serrated hose end.

Quality Assurance: Fitting is fully assembled and factory tested prior to shipment. 10 bar (150 PSI) test pressure and maximum working pressure.

Ordering Information

Options

Gooseneck	200mm (8") gooseneck in place of 150mm (6")	<input type="checkbox"/> BT4604-8WSA
Outlet Fitting	BO055 aerator in place of hose end	<input type="checkbox"/> BT4604-55WSA
	BT118 pipe interrupter fitting with hose end	<input type="checkbox"/> BT4604-118WSA
Inlet Connections	Braided stainless steel flexible connectors in place of copper tubes	<input type="checkbox"/> BT4604HSP

Product Finish

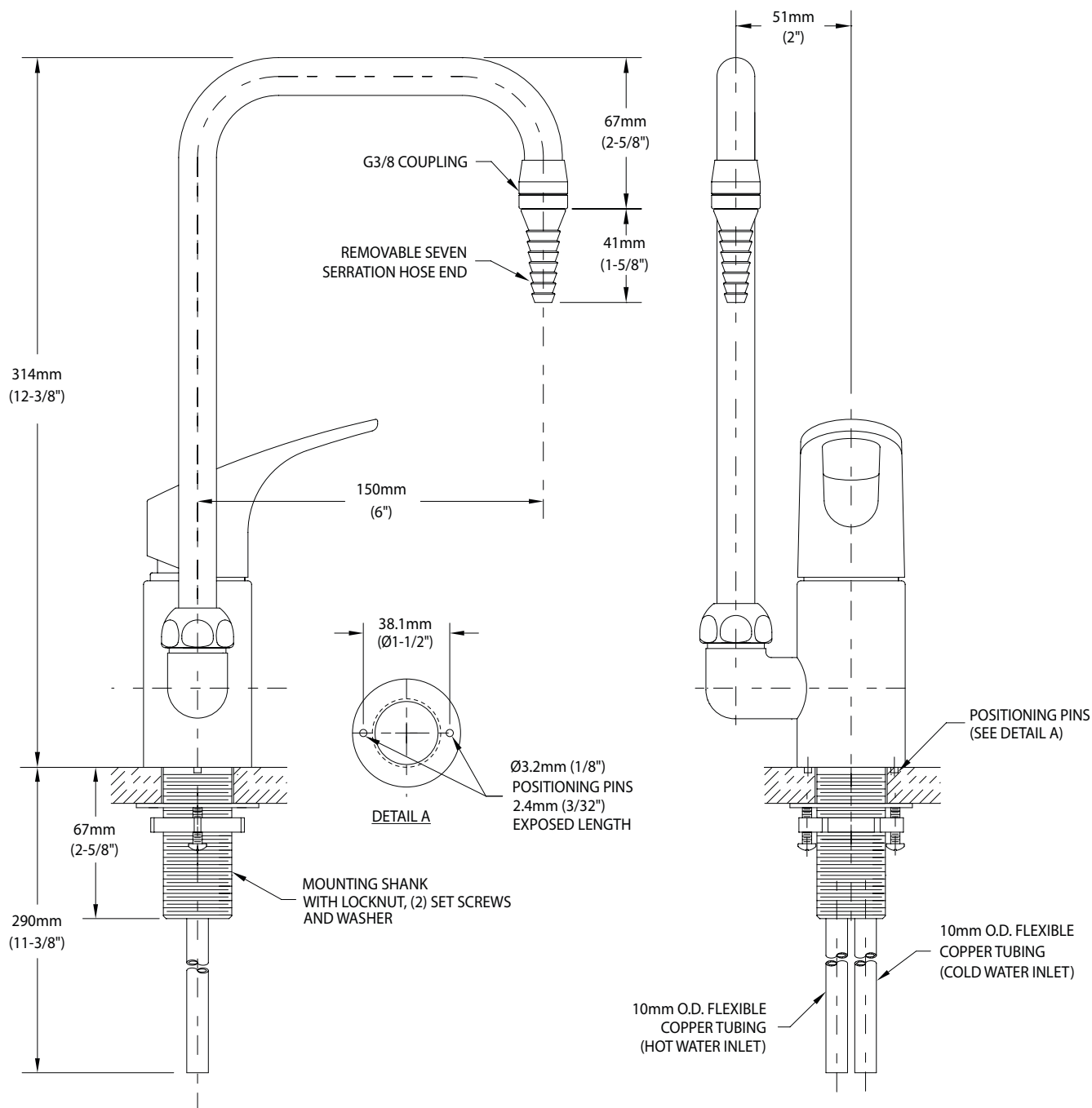
<input type="checkbox"/> WHT	Gloss white powder coated finish	<input type="checkbox"/> PCL	Polished chrome plated finish with clear epoxy coating
<input type="checkbox"/> GRY	Gloss light gray powder coated finish	<input type="checkbox"/> SCC	Satin chrome plated finish with clear epoxy coating
<input type="checkbox"/> GRD	Gloss dark gray powder coated finish	<input type="checkbox"/> SNC	Satin nickel plated finish with clear epoxy coating
<input type="checkbox"/> STM	Starburst metallic powder coated finish		

Note: Refer to "Product Finishes" catalog for complete information on finishes.

Media

☐ _____

BT4604 Single Handle Mixer Tap, Bench Mounted



NOTES:

1. FITTING IS FULLY ASSEMBLED AND FACTORY TESTED PRIOR TO SHIPMENT.
2. MAXIMUM WORKING PRESSURE IS 10 BAR (150 PSI).

Rev. 122718

THIS SPACE FOR ARCHITECT/ENGINEER APPROVAL

Due to continuing product improvement, the information contained in this document is subject to change without notice. All dimensions are $\pm 6\text{mm}$ (1/4"). Rev. 122718