

**BT4860FI-226WSA** Push/Turn Gas Valve, Wall/Panel/Overhead Mounted



**Application:** Flow control of burning or combustible gases such as natural gas, propane and bottled gas. Valve is certified for natural gas service by CSA International.

**Mounting:** Flanged inlet with locator pins.

**Valve Body:** Straight pattern forged brass.

**Headwork:** Self-contained push/turn cartridge with rotating ceramic discs. Valve locks in closed position.

**Handle:** Forged brass handle with index disc and pop-up indicator buttons. Handle locks in closed position. Handle must be pushed down to unlock and open valve. Red pop-up buttons indicate if valve is open or closed. Handle and index disc are color coded and marked per EN 13792.

**Inlet:** Furnished with G1/2 mounting shank, locknut and washer. G1/2 male inlet.

**Outlet:** G3/8 female outlet. Furnished with removable straight serrated hose end or quick connect fitting with hose end, as ordered (see below).

**Quality Assurance:** Fitting is fully assembled and factory tested prior to shipment. 10 bar (150 PSI) test pressure and 7 bar (100 PSI) maximum working pressure.

**Ordering Information**

**Outlet Fitting Options**

Serrated hose end  BT4860FI-226WSA

Quick connect fitting with hose end  BT4863HFI-226WSA

**Note:** If red pop-up indicator buttons are not required, delete suffix "I". Fitting will be furnished with molded nylon handle.

**Product Finish**

WHT Gloss white powder coated finish  PCL Polished chrome plated finish with clear epoxy coating

GRY Gloss light gray powder coated finish  SCC Satin chrome plated finish with clear epoxy coating

GRD Gloss dark gray powder coated finish  SNC Satin nickel plated finish with clear epoxy coating

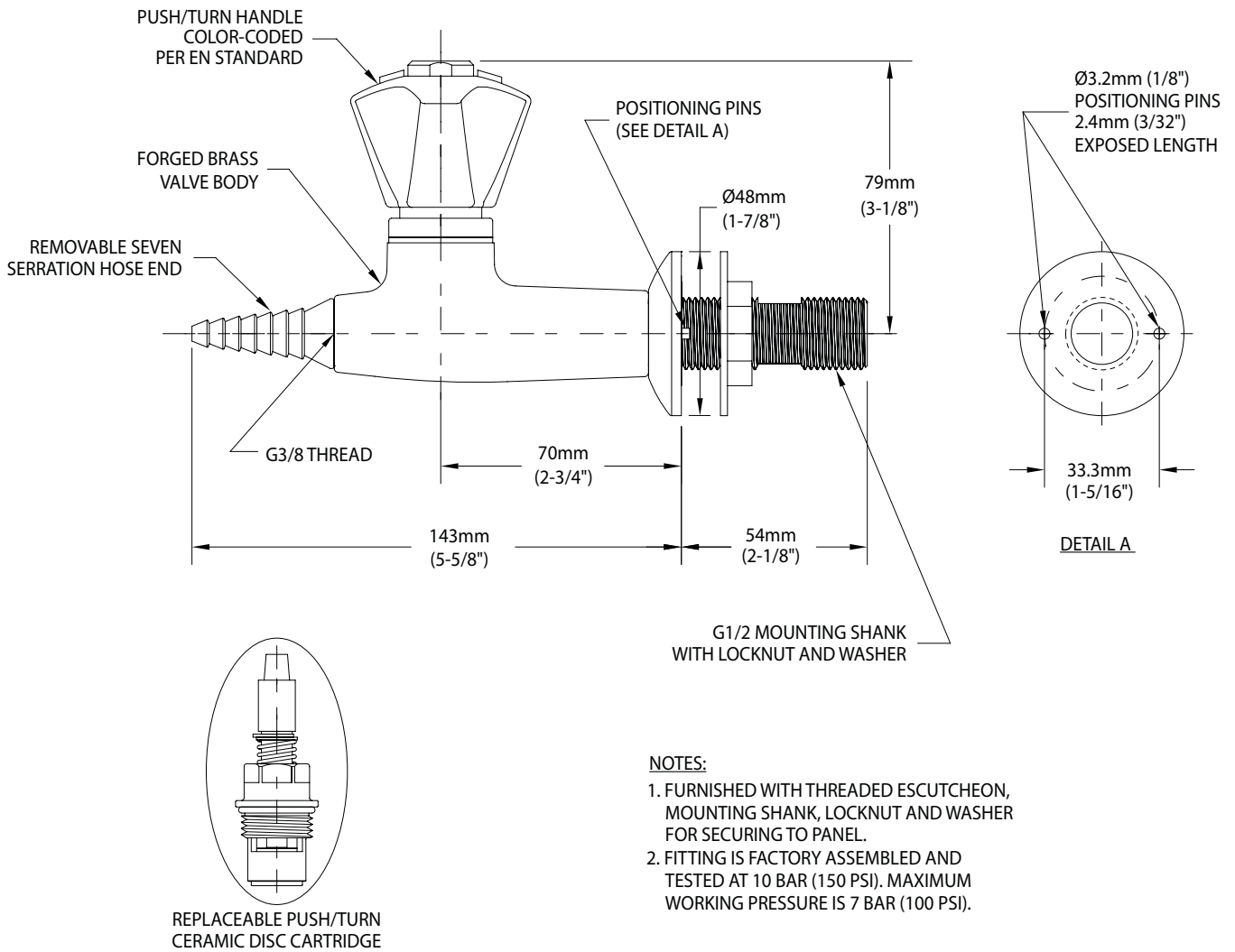
STM Starburst metallic powder coated finish

**Note:** Refer to "Product Finishes" catalog for complete information on finishes.

**Media**

\_\_\_\_\_

**BT4860FI-226WSA** Push/Turn Gas Valve, Wall/Panel/Overhead Mounted



Rev. 052318

THIS SPACE FOR ARCHITECT/ENGINEER APPROVAL

Due to continuing product improvement, the information contained in this document is subject to change without notice. All dimensions are ± 6mm (1/4"). Rev. 071718