

**BTVR411** Mixer Tap, Bench Mounted, Vandal-Resistant Construction

**BTVR414** Mixer Tap, Bench Mounted, Rigid/Swing Gooseneck, Vandal-Resistant Construction



**Application:** Laboratory water mixer tap for hot and cold water. Tap has heavy duty construction to withstand bending, breakage and disassembly. All threaded connections are secured with cement.

**Mounting:** Bench or countertop mounted with locator pins.

**Body:** Forged brass.

**Headworks:** WaterSaver self-contained compression valve cartridges with replaceable stainless steel seats. Packing nuts are secured with set screws to prevent removal.

**Handles:** Molded nylon hooded style handles with index discs. Handles and indexes are color coded and marked per EN 13792. Index discs are cemented in place.

**Gooseneck:** 150mm (6") rigid gooseneck. Gooseneck riser is 1/2" IPS heavy wall pipe to resist bending and breakage.

**Inlets:** (2) 10mm OD flexible copper tubes. Furnished complete with 30.5mm (1-3/16") dia. mounting shank, locknut and washer.

**Outlet:** G3/8 female outlet with anti-splash serrated hose end. Hose end has internal check valve to prevent backflow. Hose end is secured with set screw to prevent removal.

**Quality Assurance:** Fitting is fully assembled and factory tested prior to shipment. 10 bar (150 PSI) test pressure and maximum working pressure.

### Ordering Information

Options		BTVR411	BTVR414
<b>Valve Construction</b>	Compression valve cartridges	<input type="checkbox"/> BTVR411	<input type="checkbox"/> BTVR414
	Ceramic disc valve cartridges	<input type="checkbox"/> BTVRC411	<input type="checkbox"/> BTVRC414
<b>Gooseneck</b>	200mm (8") gooseneck in place of 150mm (6")	<input type="checkbox"/> BTVR411-8	<input type="checkbox"/> BTVR414-8
<b>Outlet Fitting</b>	BO055VR aerator in place of hose end	<input type="checkbox"/> BTVR411-55	<input type="checkbox"/> BTVR414-55
	BT118 pipe interrupter fitting with hose end	<input type="checkbox"/> BTVR411-118	<input type="checkbox"/> BTVR414-118
<b>Inlet Connections</b>	Braided stainless steel flexible connectors in place of copper tubes	<input type="checkbox"/> BTVR411HSP	<input type="checkbox"/> BTVR414HSP

### Product Finish

<input type="checkbox"/> WHT	Gloss white powder coated finish	<input type="checkbox"/> PCL	Polished chrome plated finish with clear epoxy coating
<input type="checkbox"/> GRY	Gloss light gray powder coated finish	<input type="checkbox"/> SCC	Satin chrome plated finish with clear epoxy coating
<input type="checkbox"/> GRD	Gloss dark gray powder coated finish	<input type="checkbox"/> SNC	Satin nickel plated finish with clear epoxy coating
<input type="checkbox"/> STM	Starburst metallic powder coated finish		

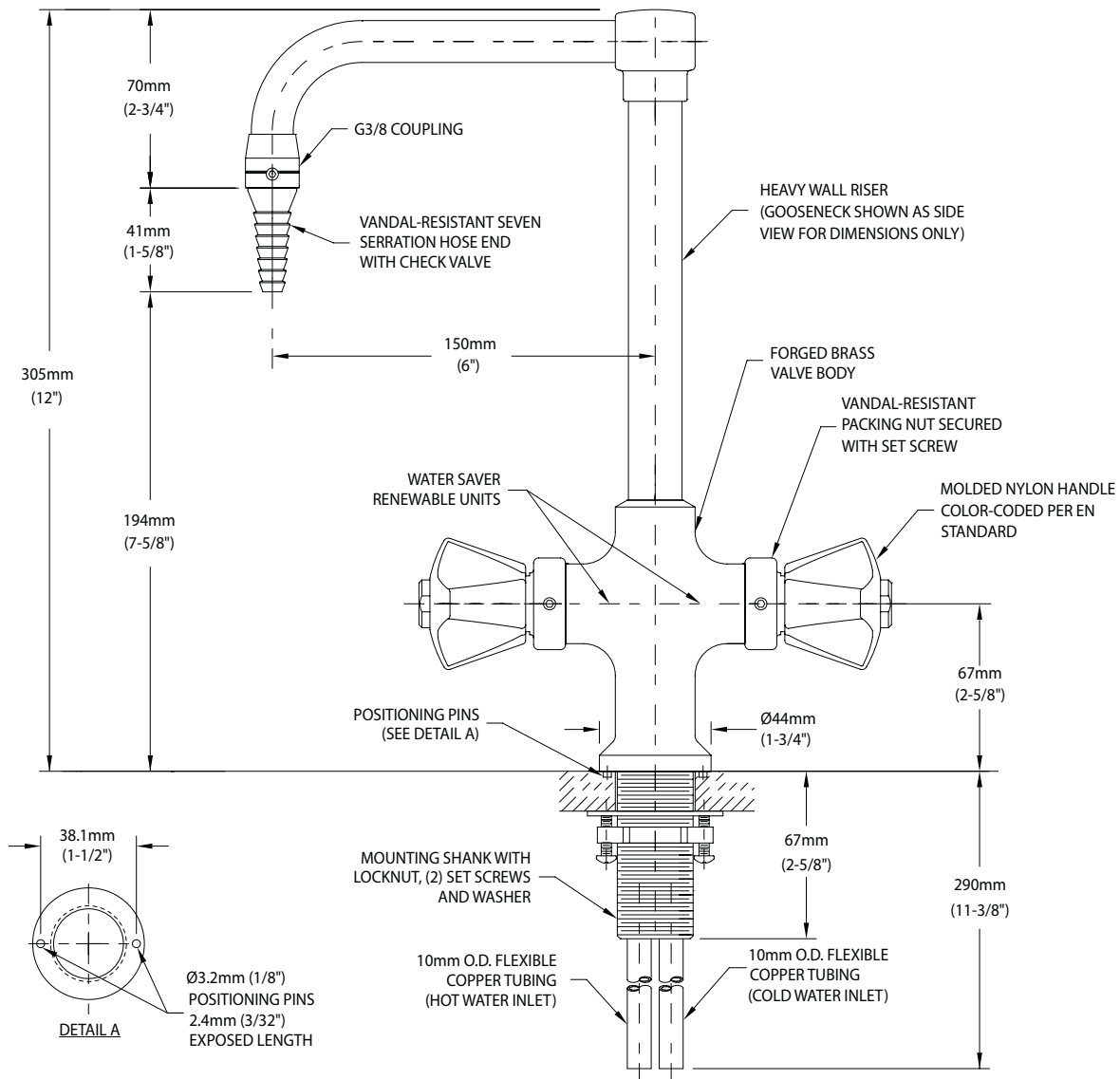
**Note:** Refer to "Product Finishes" catalog for complete information on finishes.

### Media

\_\_\_\_\_

**BTVR411** Mixer Tap, Bench Mounted, Vandal-Resistant Construction

**BTVR414** Mixer Tap, Bench Mounted, Rigid/Swing Gooseneck, Vandal-Resistant Construction



**NOTES:**

1. FITTING IS FULLY ASSEMBLED AND FACTORY TESTED PRIOR TO SHIPMENT.
2. MAXIMUM WORKING PRESSURE IS 10 BAR (150 PSI).
3. ALL CONNECTIONS ARE SECURED WITH SET SCREWS OR CEMENT.

Rev. 122818

THIS SPACE FOR ARCHITECT/ENGINEER APPROVAL

Due to continuing product improvement, the information contained in this document is subject to change without notice. All dimensions are ± 6mm (1/4"). Rev. 082118