

☐ **FE750P** Eye/Face Wash, Wall Mounted, Plastic Bowl



Application: Eye/face wash with plastic bowl for wall mounting. Two large FS-Plus™ spray-type outlet heads deliver a flood of water for rinsing eyes and face.

Spray Head Assembly: Two FS-Plus™ spray heads. Each head has a “flip top” dust cover, internal flow control and filter to remove impurities from the water flow.

Valve: 1/2" IPS chrome plated brass stay-open ball valve. Valve is US-made with chrome plated brass ball and PTFE seals.

Bowl: 11-3/4" diameter orange ABS plastic.

Mounting: Heavy duty cast aluminum wall bracket with corrosion resistant powder coated finish.

Supply: 1/2" NPT female inlet.

Waste: 1-1/4" NPT female outlet.

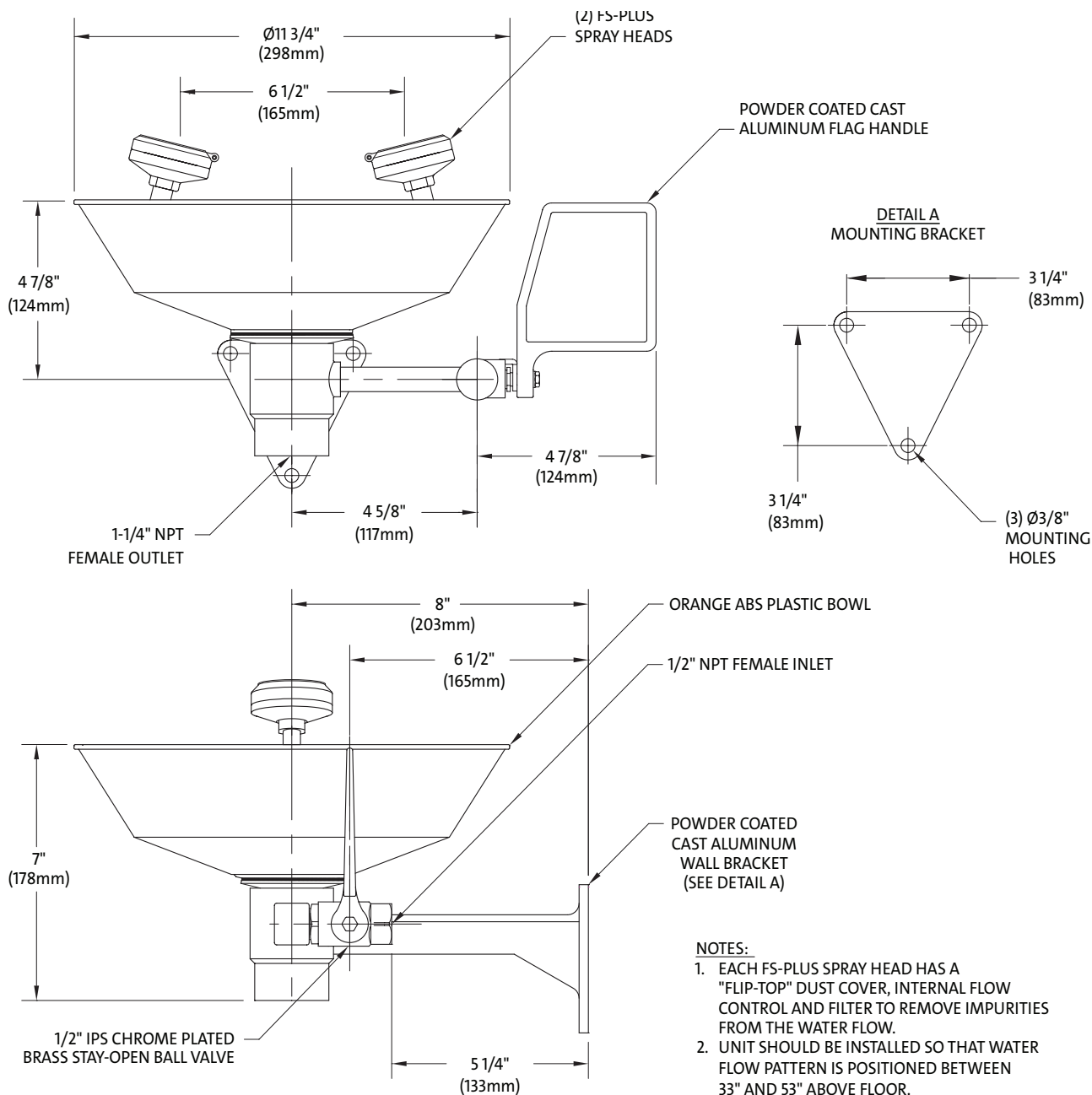
Sign: ANSI-compliant identification sign.

Quality Assurance: Unit is completely assembled and water tested prior to shipment.

Available Options

- ☐ **TM6020** Thermostatic mixing valve precisely blends hot and cold water to deliver tepid water as required by ANSI Z358.1-2014. Refer to “Thermostatic Mixing Valves” section for complete technical and product selection information.
- ☐ **GRN** Green ABS plastic bowl.
- ☐ **YEL** Yellow ABS plastic bowl.
- ☐ **HS** Auxiliary hand-held drench hose for rinsing eyes, face or body.
- ☐ **T** Chrome plated brass tailpiece and trap with 1-1/2" IPS waste connection.
- ☐ **TP** 1-1/2" OD Chrome plated brass tailpiece.

FE750P Eye/Face Wash, Wall Mounted, Plastic Bowl



this space for architect/engineer approval

Due to continuing product improvement, the information contained in this document is subject to change without notice. All dimensions are $\pm 1/4"$ (6mm). rev. 0422

Sign Included

